

SEOUL/Incheon Intl(RKSI)
ILS Z or LOC Z RWY 15L
CAT II & III

AERONAUTICAL DATA TABULATION

ILS Z/LOC Z Approach to RWY 15L		
Fix / Point		Coordinates
TIMON(IAF)		37°40'48.0"N 126°24'36.1"E
KARRA(SDF)		37°39'59.6"N 126°18'23.2"E
GASOL(IF)		37°37'24.7"N 126°18'56.4"E
DEMOK(FAF)	BRG 152.61°/7.92NM ISLL	37°35'22.4"N 126°20'45.7"E
D3.0 ISLL(SDF LOC ONLY)	BRG 152.61°/2.98NM ISLL	37°31'20.2"N 126°24'21.7"E
D1.0 ISLL(MAPt LOC ONLY)	BRG 152.61°/0.98NM ISLL	37°29'42.2"N 126°25'49.0"E
NCN VOR/DME		37°29'41.7"N 126°25'49.2"E
THR RWY 15L		37°29'02.20"N 126°26'24.56"E
ISLL DME		37°28'56.4"N 126°26'35.6"E
Climb to 520 ft	HDG 153	-
D12 NCN	R 137 NCN/12.00NM NCN	37°22'06.2"N 126°37'29.9"E
KESAN	BRG 213.08°/13.00NM NCN	37°17'53.0"N 126°18'58.0"E

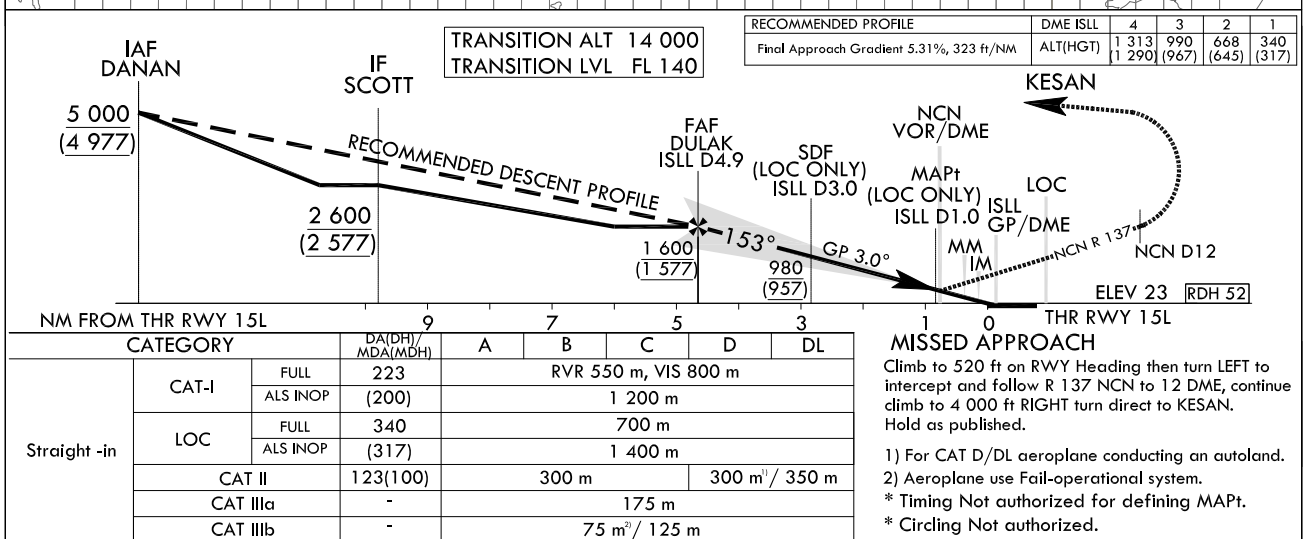
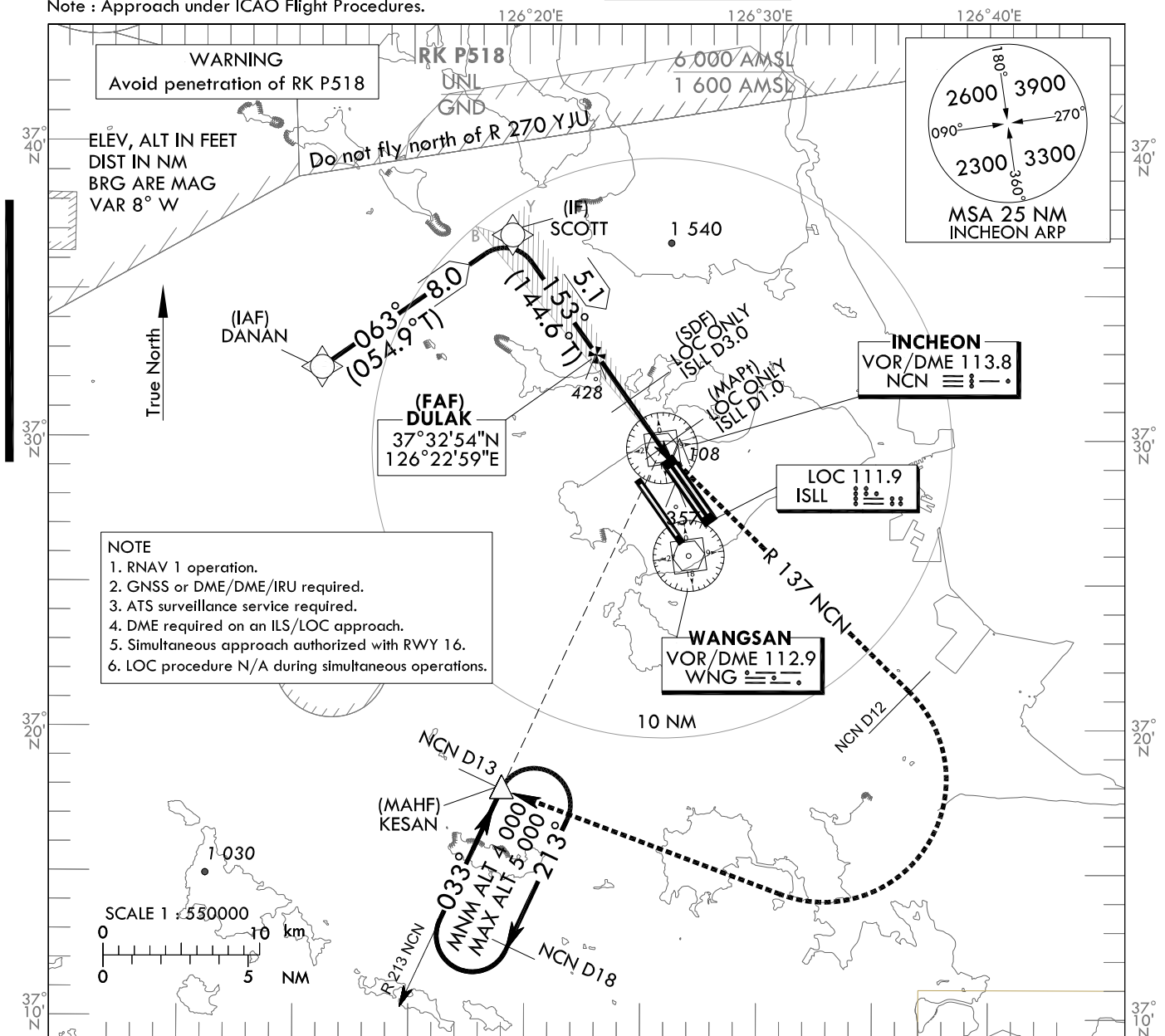
**INSTRUMENT
APPROACH
CHART - ICAO**

AERODROME ELEV 23 ft
HEIGHTS RELATED TO
THR RWY 15L - ELEV 23 ft

SEOUL APP 119.75
119.1
INCHEON TWR 118.2
118.8

SEOUL/Incheon Intl(RKSI)
ILS Y or LOC Y RWY 15L
CAT II & III

Note : Approach under ICAO Flight Procedures.



Change : Amended ILS plan view symbol.

SEOUL/Incheon Intl(RKSI)
ILS Y or LOC Y RWY 15L
CAT II & III

AERONAUTICAL DATA TABULATION

ILS Y/LOC Y Approach to RWY 15L			
Fix / Point		Coordinates	
DANAN(IAF)		37°32'26.0"N	126°11'04.0"E
SCOTT(IF)		37°37'01.6"N	126°19'17.0"E
DULAK(FAF)	BRG 152.51°/4.89NM ISLL	37°32'53.5"N	126°22'58.5"E
D3.0 ISLL(SDF LOC ONLY)	BRG 152.51°/2.98NM ISLL	37°31'20.2"N	126°24'21.7"E
D1.0 ISLL(MAPt LOC ONLY)	BRG 152.51°/0.98NM ISLL	37°29'42.2"N	126°25'49.0"E
NCN VOR/DME		37°29'41.7"N	126°25'49.2"E
THR RWY 15L		37°29'02.20"N	126°26'24.56"E
ISLL DME		37°28'56.4"N	126°26'35.6"E
Climb to 520 ft	HDG 153	-	
D12 NCN	R 137 NCN/12.00NM NCN	37°22'06.2"N	126°37'29.9"E
KESAN	BRG 213.08°/13.00NM NCN	37°17'53.0"N	126°18'58.0"E

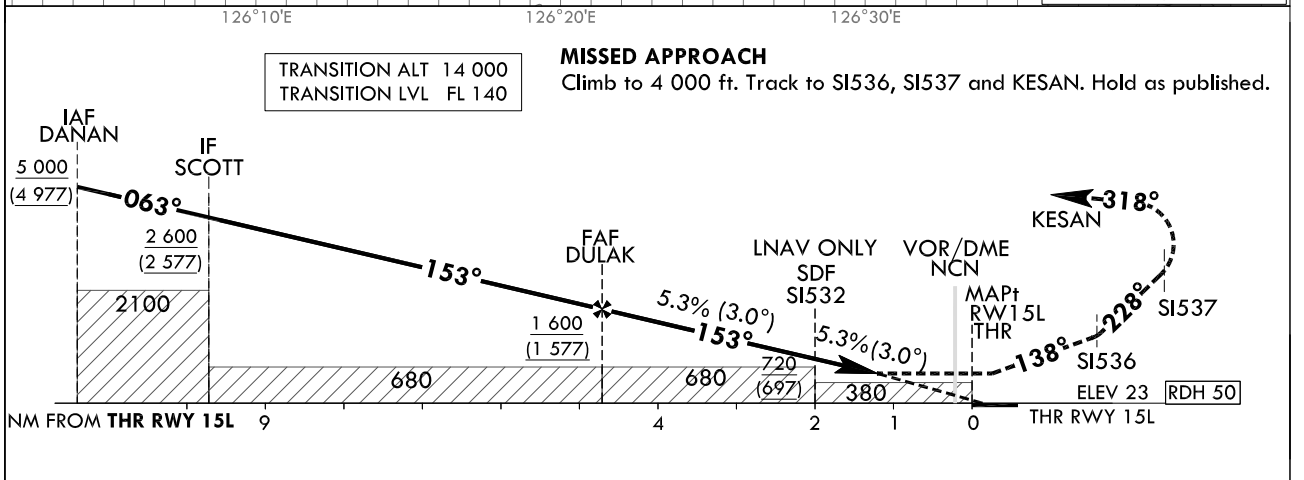
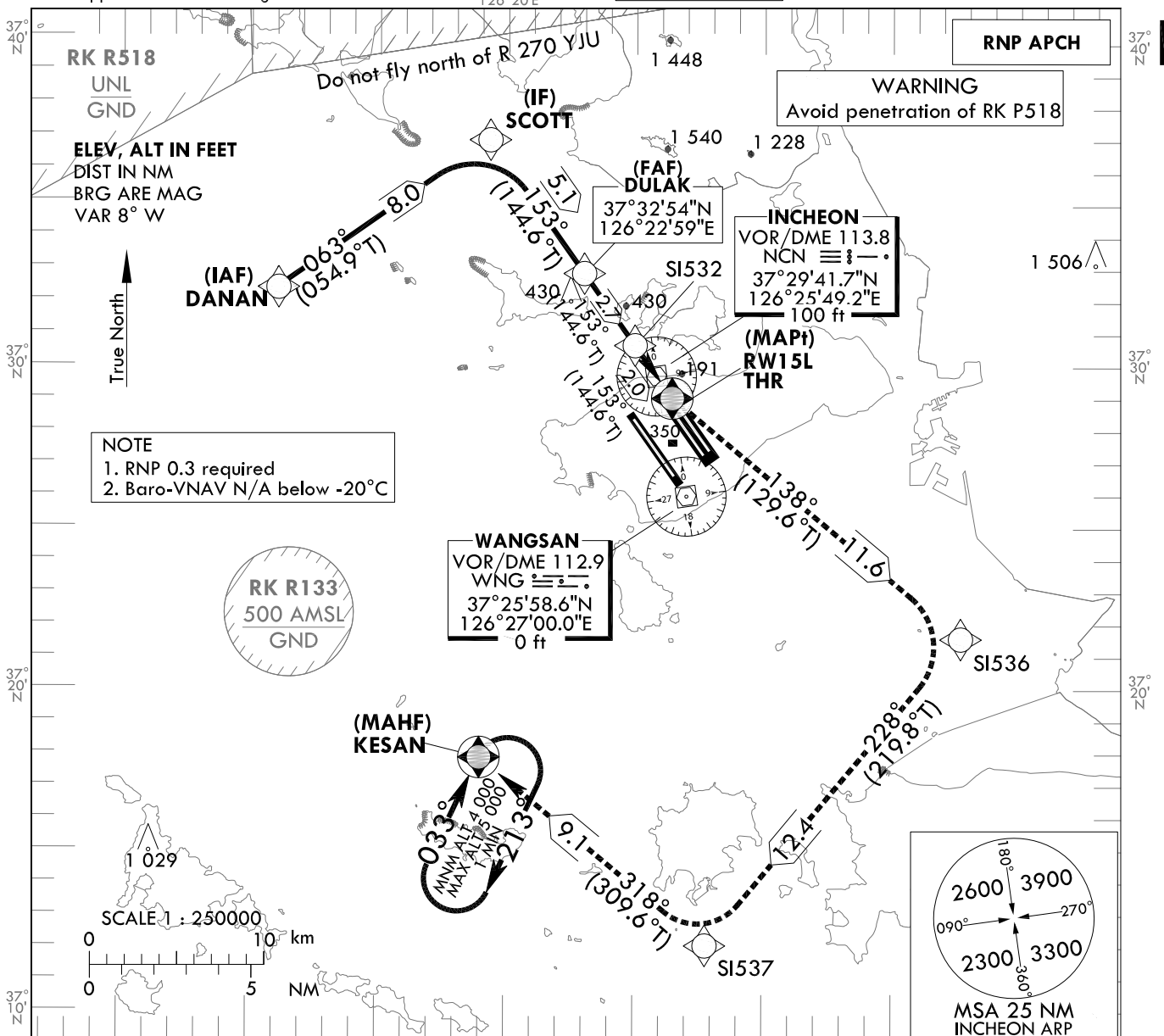
**INSTRUMENT
APPROACH
CHART - ICAO**

AERODROME ELEV 23 ft
HEIGHTS RELATED TO
THR RWY 15L - ELEV 23 ft

SEOUL APP 119.75
119.1
INCHEON TWR 118.2
118.8

SEOUL/Incheon Intl(RKSI)
RNP RWY 15L

Note : Approach under ICAO Flight Procedures.



CATEGORY		MDA(H)/DA(H)	A	B	C	D	Knots							
LNAV	FULL	450 (427)		1 300 m			Rate of descent	V/V	fpm	323	485	647	809	970
	ALS INOP			2 000 m										
LNAV/VNAV	FULL	430 (407)		1 200 m			* Timing Not authorized for defining MAPt. * Circling Not authorized.							
	ALS INOP			1 900 m										

Change : Amended procedure name(RNAV(GNSS) → RNP).

AERONAUTICAL DATA TABULATION

Instrument Approach Procedure Coding Tables

Serial Number	Path Descriptor	Waypoint Identifier	Fly-over	Course/Track °M(°T)	Distance (NM)	Turn direction	Altitude (ft)	Speed (kt)	Coordinates	VPA/TCH	Navigation specification	Remarks
001	IF	DANAN	-	-	-	-	+5 000	-	37°32'26.0"N 126°11'04.0"E (R 291 NCN/D12, R 305 WNG/D14)	-	RNP APCH	IAF
002	TF	SCOTT	-	063 (054.9)	8.0	-	+2 600	-	37°37'01.6"N 126°19'17.0"E (R 333 NCN/D9, R 339 WNG/D13)	-	RNP APCH	IF
003	TF	DULAK	-	153 (144.6)	5.1	-	+1 600	-	37°32'53.5"N 126°22'58.5"E (R 333 NCN/D4, R 343 WNG/D8)	-	RNP APCH	FAF
004	TF	S1532	-	153 (144.6)	2.7	-	+720	-	37°30'40.2"N 126°24'57.3"E (R 333 NCN/D1, R 349 WNG/D5)	-	RNP APCH	SDF
005	TF	RW15L	Y	153 (144.6)	2.0	-	+450	-	37°29'02.20"N 126°26'24.56"E (R 152 NCN/D1, R 359 WNG/D3)	-3.01/50	RNP APCH	MAPt
006	TF	S1536	-	138 (129.6)	11.6	-	-	-	37°21'35.4"N 126°37'39.8"E (R 139 NCN/D12, R 125 WNG/D10)	-	RNP APCH	-
007	TF	S1537	-	228 (219.8)	12.4	-	-	-	37°12'03.9"N 126°27'45.9"E (R 183 NCN/D18, R 185 WNG/D14)	-	RNP APCH	-
008	TF	KESAN	Y	318 (309.6)	9.1	-	+4 000	-	37°17'53.0"N 126°18'58.0"E (R 213 NCN/D13, R 226 WNG/D10)	-	RNP APCH	-
009	HM	KESAN	Y	033 (025.0)	-	R	-5 000 +4 000	-	37°17'53.0"N 126°18'58.0"E (R 213 NCN/D13, R 226 WNG/D10)	-	RNP APCH	1 min (Outbound timing)

Change : Amended procedure name(RNAV(GNSS) → RNP).

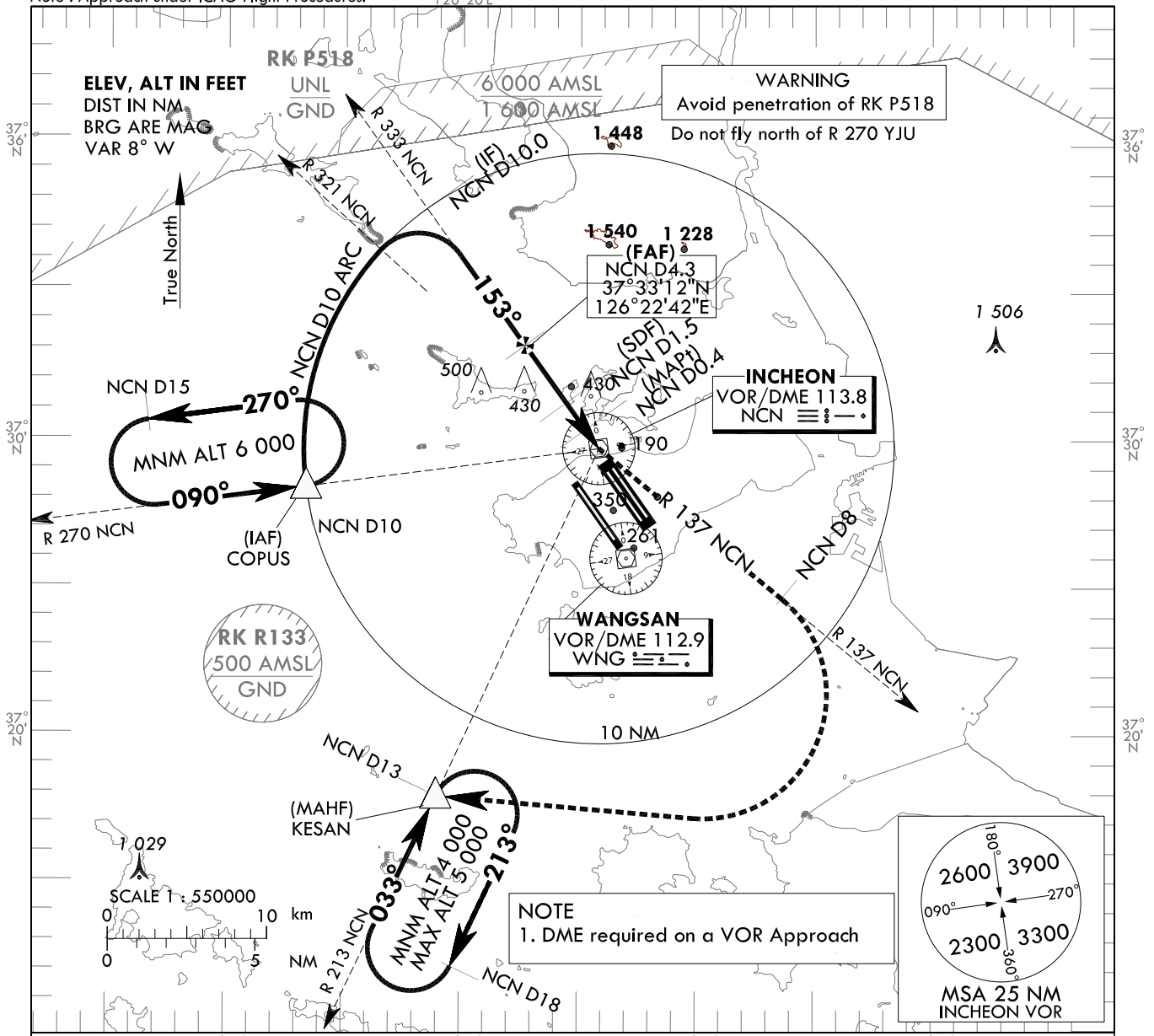
**INSTRUMENT
APPROACH
CHART - ICAO**

AERODROME ELEV 23 ft
HEIGHTS RELATED TO
THR RWY 15L - ELEV 23 ft

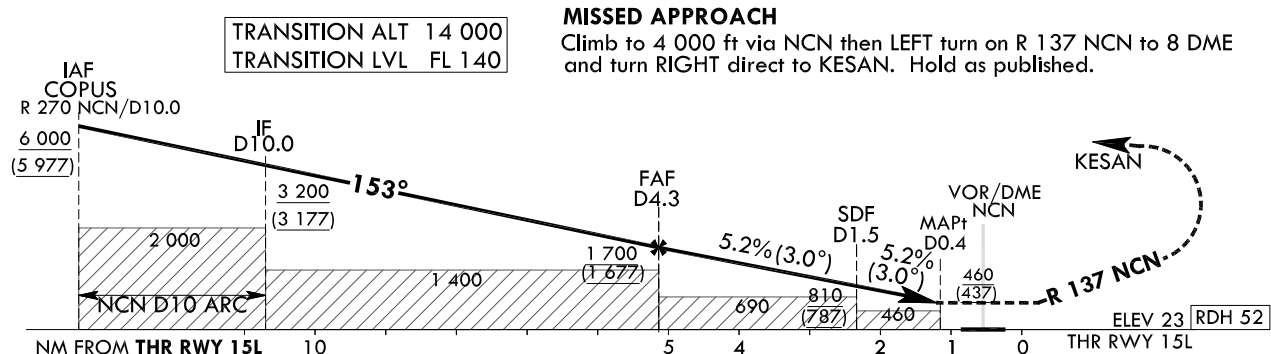
SEOUL APP 119.75
119.1
INCHEON TWR 118.2
118.8

**SEOUL/Incheon Intl(RKSI)
VOR
RWY 15L**

Note : Approach under ICAO Flight Procedures.



RECOMMENDED DESCENT PROFILE		DME NCN	3	2	1
Final Approach Gradient 5.2%(317.9 ft/NM)to SDF, 5.2%(318.3 ft/NM) to THR		ALT(HGT)	1 287(1 264)	969(946)	650(628)



CATEGORY		MDA(MDH)	A	B	C	D	Knots						
Straight-in	FULL	460 (437)	1 600 m				Rate of descent	V/V fpm	318	477	636	795	954
	ALS INOP		2 300 m					* Timing Not authorized for defining MAPt. * Circling Not authorized.					

SEOUL/Incheon Intl(RKSI)

VOR

RWY 15L

AERONAUTICAL DATA TABULATION

VOR Approach to RWY 15L from COPUS		
Fix / Point		Coordinates
COPUS(IAF)		37°28'21.8"N 126°13'22.0"E
D10 NCN(IF)	BRG 153.00°/10.00NM NCN	37°37'52.4"N 126°18'33.7"E
D4.3 NCN(FAF)	BRG 153.00°/4.30NM NCN	37°33'12.4"N 126°22'42.4"E
D1.5 NCN(SDF)	BRG 153.00°/1.50NM NCN	37°30'55.0"N 126°24'44.2"E
D0.4 NCN(MAPt)	BRG 153.00°/0.40NM NCN	37°30'01.0"N 126°25'32.1"E
NCN VOR/DME		37°29'41.7"N 126°25'49.2"E
THR RWY15L	Final approach descent angle 2.99°(FAF - SDF)/3.00°(SDF - THR)	37°29'02.20"N 126°26'24.56"E
D8 NCN	R 137 NCN/8.00NM NCN	37°24'40.1"N 126°33'39.1"E
KESAN	BRG 283.39°/13.00NM NCN	37°17'53.0"N 126°18'58.0"E

Change : Amended coordinate format.

**INSTRUMENT
APPROACH
CHART - ICAO**

AERODROME ELEV 23 ft
HEIGHTS RELATED TO
THR RWY 15R - ELEV 23 ft

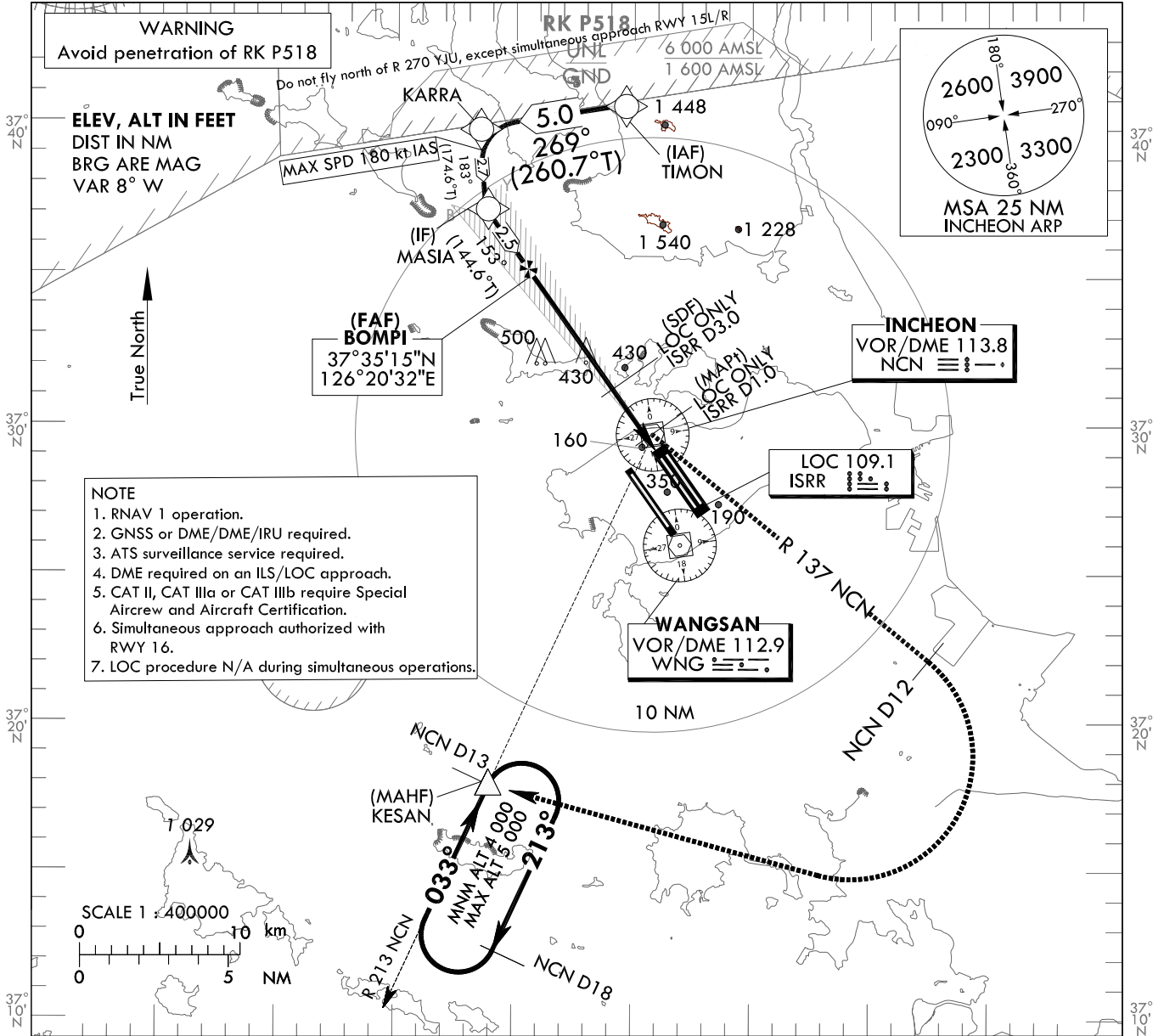
SEOUL APP 119.75
119.1
INCHEON TWR 118.2
118.8

**SEOUL/Incheon Intl(RKSI)
ILS Z or LOC Z RWY 15R
CAT II & III**

Note : Approach under ICAO Flight Procedures.

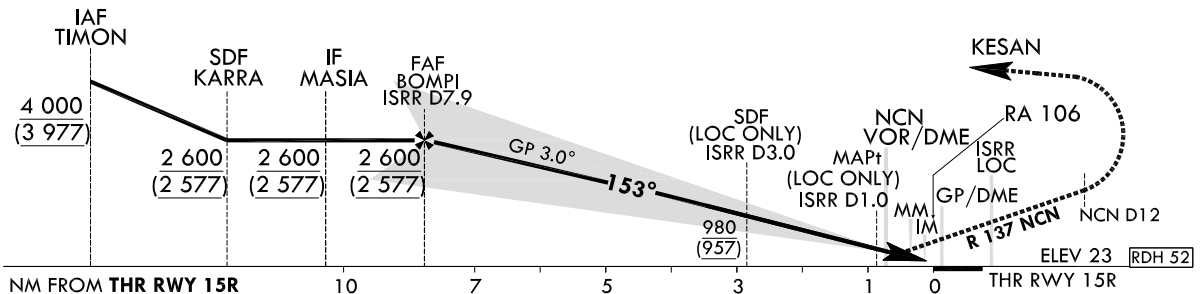
126°20'E

126°40'E



TRANSITION ALT 14 000
TRANSITION LVL FL 140

RECOMMENDED PROFILE		DME ISRR	7	6	5	4	3	2
Final Approach Gradient 5.35%, 325 ft/NM		ALT(HGT)	2 299 (2 276)	1 974 (1 951)	1 649 (1 626)	1 323 (1 300)	998 (975)	673 (650)



CATEGORY	DA(DH)/ MDA(MDH)	A					DL	
		A	B	C	D	DL	DL	
Straight -in	CAT-I	FULL	223 (200)	RVR 550 m, VIS 800 m				
		ALS INOP	-	1 200 m				
	LOC	GP INOP	370 (347)	900 m				
		GP & ALS INOP	-	1 600 m				
		CAT II	123(100)	300 m		300 m ¹⁾ /350 m		
CAT IIIa	-	175 m						
CAT IIIb	-	75 m ²⁾ /125 m						

MISSED APPROACH
Climb to 520 ft on RWY Heading then turn LEFT to intercept and follow R 137 NCN to 12 DME, continue climb to 4 000 ft RIGHT turn direct to KESAN. Hold as published.

* Timing Not authorized for defining MAPt.
* Circling Not authorized.

1) For CAT D/DL aeroplane conducting an autoland.
2) Aeroplane use Fail-operational system.

Change : Amended ILS plan view symbol.

SEOUL/Incheon Intl(RKSI)
ILS Z or LOC Z RWY 15R
CAT II & III

AERONAUTICAL DATA TABULATION

ILS/LOC Approach to RWY 15R		
Fix / Point		Coordinates
TIMON(IAF)		37°40'48.0"N 126°24'36.1"E
KARRA(SDF)		37°39'59.6"N 126°18'23.2"E
MASIA(IF)		37°37'16.9"N 126°18'42.6"E
BOMPI(FAF)	BRG 152.61°/7.92 NM ISRR	37°35'14.6"N 126°20'31.9"E
D3.0 ISRR(SDF LOC ONLY)	BRG 152.61°/3.00 NM ISRR	37°31'13.4"N 126°24'07.1"E
D1.0 ISRR(MAP† LOC ONLY)	BRG 152.61°/1.00 NM ISRR	37°29'35.3"N 126°25'34.4"E
NCN VOR/DME		37°29'41.7"N 126°25'49.2"E
THR RWY15R		37°28'54.44"N 126°26'10.82"E
ISRR DME		37°28'48.7"N 126°26'21.9"E
Climb to 520 ft	HDG 153	-
D12 NCN	R 137 NCN/12.00 NM NCN	37°22'06.2"N 126°37'29.9"E
KESAN	BRG 213.07°/13.00 NM NCN	37°17'53.0"N 126°18'58.0"E

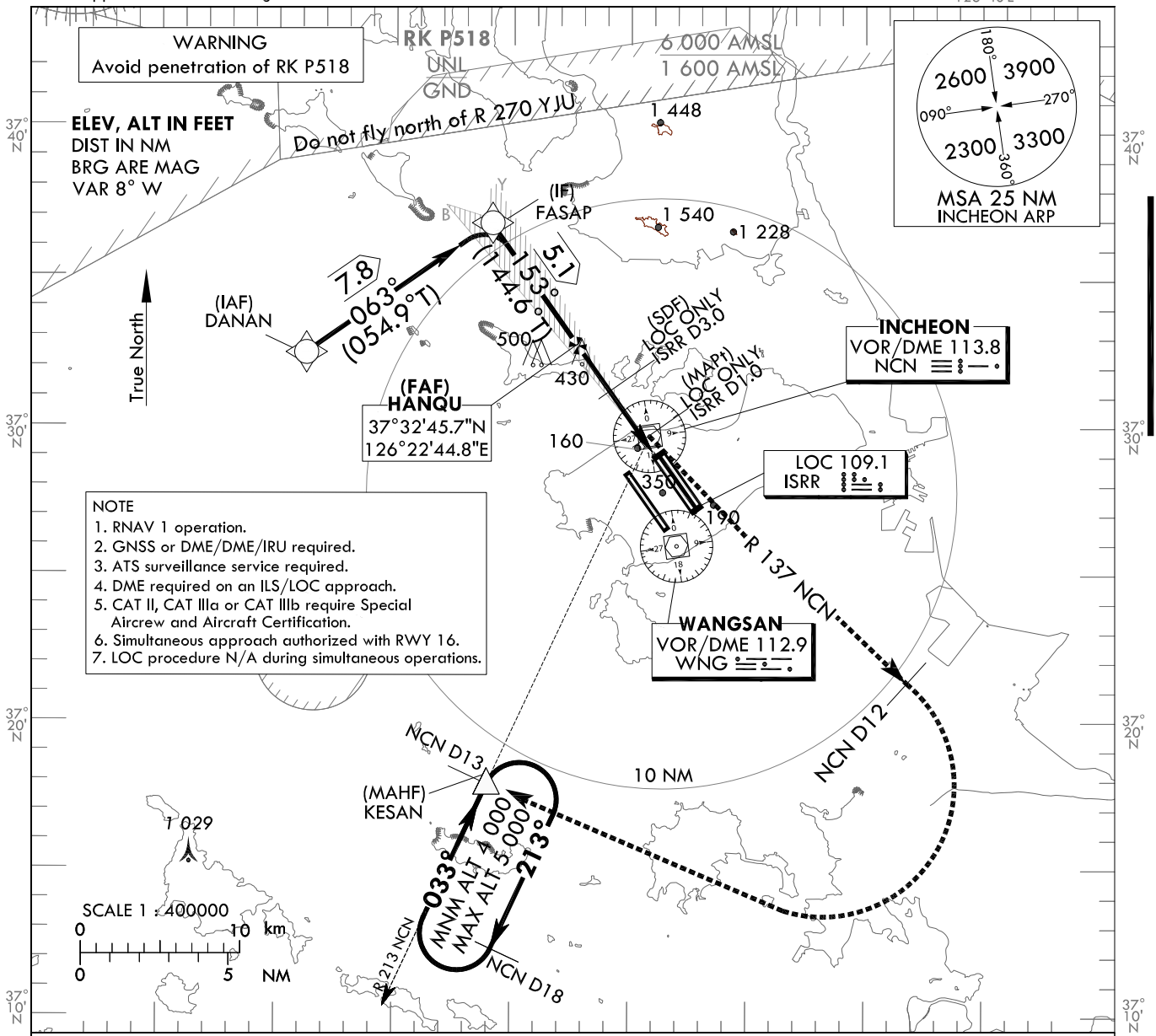
**INSTRUMENT
APPROACH
CHART - ICAO**

AERODROME ELEV 23 ft
HEIGHTS RELATED TO
THR RWY 15R - ELEV 23 ft
126°20'E

SEOUL APP 119.75
119.1
INCHEON TWR 118.2
118.8

**SEOUL/Incheon Intl(RKSI)
ILS Y or LOC Y RWY 15R
CAT II & III**

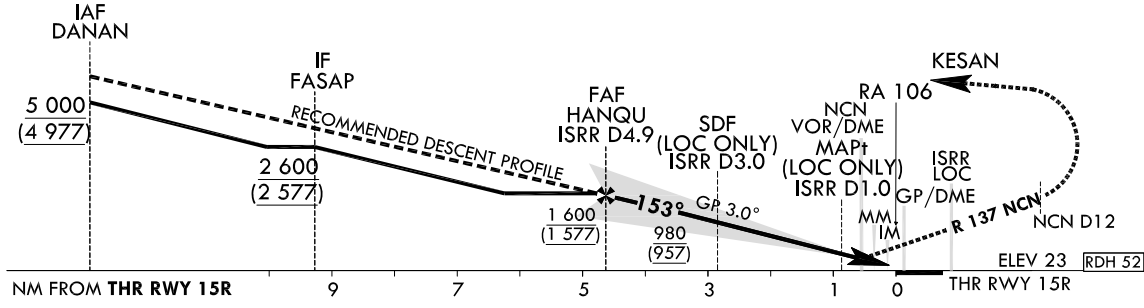
Note : Approach under ICAO Flight Procedures.



NOTE
1. RNAV 1 operation.
2. GNSS or DME/DME/IRU required.
3. ATS surveillance service required.
4. DME required on an ILS/LOC approach.
5. CAT II, CAT IIIa or CAT IIIb require Special Aircrew and Aircraft Certification.
6. Simultaneous approach authorized with RWY 16.
7. LOC procedure N/A during simultaneous operations.

TRANSITION ALT 14 000
TRANSITION LVL FL 140

RECOMMENDED PROFILE		DME ISRR	4	3	2
Final Approach Gradient 5.31%, 323 ft/NM		ALT(HGT)	1 313 (1 290)	990 (967)	667 (644)



CATEGORY	DA(DH)/MDA(MDH)	A					B		C		D		DL			
		RVR 550 m, VIS 800 m					1 200 m		900 m		1 600 m		300 m ¹⁾ /350 m			
Straight-in	CAT-I	FULL	223 (200)										300 m		300 m ¹⁾ /350 m	
		ALS INOP	370 (347)										175 m		75 m ²⁾ /125 m	
	LOC	GP INOP	123(100)										-		-	
		GP & ALS INOP	-										-		-	
		CAT II	-										-		-	

MISSED APPROACH
Climb to 520 ft on RWY Heading then turn LEFT to intercept and follow R 137 NCN to 12 DME, continue climb to 4 000 ft RIGHT turn direct to KESAN.
Hold as published.

* Timing Not authorized for defining MAPt.
* Circling Not authorized.

1) For CAT D/DL aeroplane conducting an autoland.
2) Aeroplane use Fail-operational system.

Change : Amended ILS plan view symbol.

SEOUL/Incheon Intl(RKSI)
ILS Y or LOC Y RWY 15R
CAT II & III

AERONAUTICAL DATA TABULATION

ILS/LOC Approach to RWY 15R from DANAN to FASAP(IF)	
Fix / Point	Coordinates
DANAN(IAF)	37°32'26.0"N 126°11'04.0"E
FASAP(IF)	37°36'53.8"N 126°19'03.3"E

ILS/LOC Approach to RWY 15R from FASAP(IF) to MAHF	
Fix / Point	Coordinates
HANQU(FAF) BRG 152.61°/4.89 NM ISRR	37°32'45.7"N 126°22'44.8"E
D3.0 ISRR(SDF) (LOC ONLY) BRG 152.61°/3.00 NM ISRR	37°31'13.4"N 126°24'07.1"E
D1.0 ISRR(MAPt) (LOC ONLY) BRG 152.61°/1.00 NM ISRR	37°29'35.3"N 126°25'34.4"E
NCN VOR/DME	37°29'41.7"N 126°25'49.2"E
THR RWY 15R	37°28'54.44"N 126°26'10.82"E
ISRR DME	37°28'48.7"N 126°26'21.9"E
Climb to 520 ft HDG 153	-
D12 NCN	-
KESAN BRG 213.07°/13.00 NM NCN	37°17'53.0"N 126°18'58.0"E

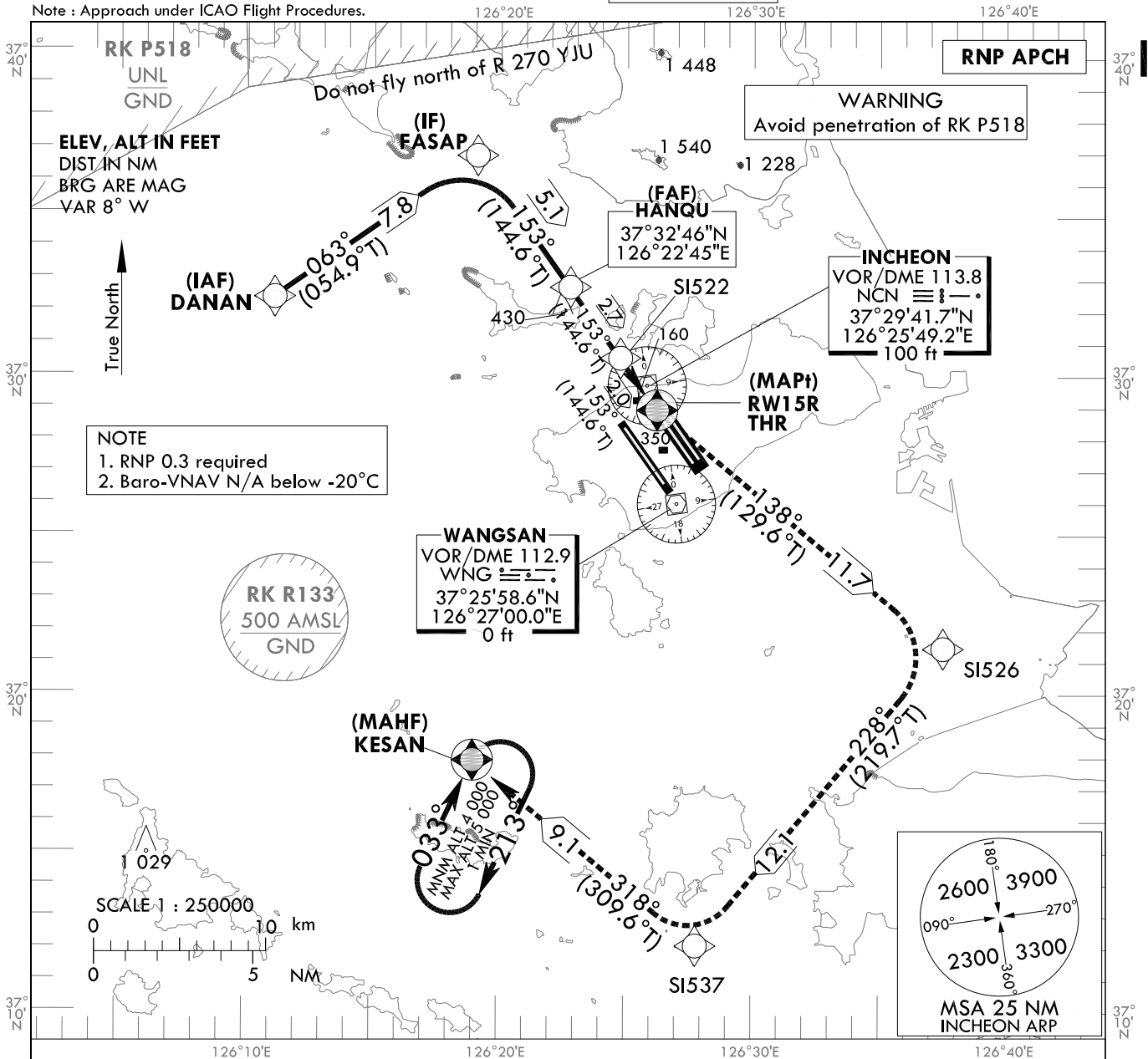
**INSTRUMENT
APPROACH
CHART - ICAO**

AERODROME ELEV 23 ft
HEIGHTS RELATED TO
THR RWY 15R - ELEV 23 ft

SEOUL APP 119.75
119.1
INCHEON TWR 118.2
118.8

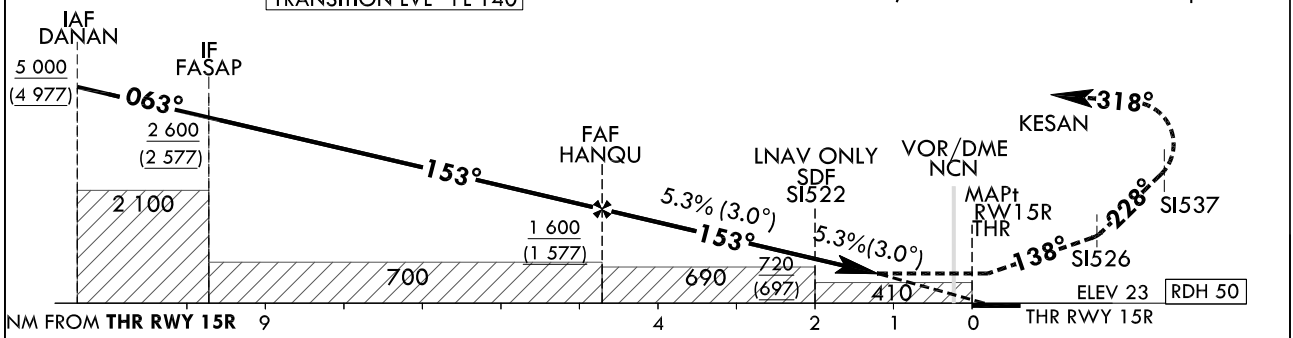
SEOUL/Incheon Intl(RKSI)
RNP RWY 15R

Note : Approach under ICAO Flight Procedures.



TRANSITION ALT 14 000
TRANSITION LVL FL 140

MISSED APPROACH
Climb to 4 000 ft. Track to SI526, SI537 and KESAN. Hold as published.



CATEGORY		MDA(H)/DA(H)	A	B	C	D	Knots						
LNAV	FULL	540 (517)		1 600 m			Rate of descent	V/V fpm	323	485	647	809	970
	ALS INOP		2 400 m										
LNAV/VNAV	FULL	430 (407)		1 200 m			* Timing Not authorized for defining MAPt. * Circling Not authorized.						
	ALS INOP		1 900 m										

Change : Amended procedure name(RNAV(GNSS) → RNP).

AERONAUTICAL DATA TABULATION

Instrument Approach Procedure Coding Tables

RNP RWY 15R

Serial Number	Path Descriptor	Waypoint Identifier	Fly-over	Course/Track °M(T)	Distance (NM)	Turn direction	Altitude (ft)	Speed (kt)	Coordinates	VPA/TCH	Navigation specification	Remarks
001	IF	DANAN	-	-	-	-	+5 000	-	37°32'26.0"N 126°11'04.0"E (R 291 NCN/D12, R 305 WNG/D14)	-	RNP APCH	IAF
002	TF	FASAP	-	063 (054.9)	7.8	-	+2 600	-	37°36'53.8"N 126°19'03.3"E (R 331 NCN/D9, R 338 WNG/D13)	-	RNP APCH	IF
003	TF	HANGU	-	153 (144.6)	5.1	-	+1 600	-	37°32'45.7"N 126°22'44.8"E (R 329 NCN/D4, R 341 WNG/D8)	-	RNP APCH	FAF
004	TF	S1522	-	153 (144.6)	2.7	-	+720	-	37°30'32.4"N 126°24'43.6"E (R 322 NCN/D1, R 346 WNG/D5)	-	RNP APCH	SDF
005	TF	RW15R	Y	153 (144.6)	2.0	-	+540	-	37°28'54.4"N 126°26'10.82"E (R 168 NCN/D1, R 355 WNG/D3)	-3.01/50	RNP APCH	MAPt
006	TF	S1526	-	138 (129.6)	11.7	-	-	-	37°21'25.5"N 126°37'29.3"E (R 140 NCN/D12, R 126 WNG/D10)	-	RNP APCH	-
007	TF	S1537	-	228 (219.8)	12.1	-	-	-	37°12'03.9"N 126°27'45.9"E (R 183 NCN/D18, R 185 WNG/D14)	-	RNP APCH	-
008	TF	KESAN	Y	318 (309.6)	9.1	-	+4 000	-	37°17'53.0"N 126°18'58.0"E (R 213 NCN/D13, R 226 WNG/D10)	-	RNP APCH	-
009	HIM	KESAN	Y	033 (025.0)	-	R	-5 000 +4 000	-	37°17'53.0"N 126°18'58.0"E (R 213 NCN/D13, R 226 WNG/D10)	-	RNP APCH	1 min (Outbound timing)

Change : Amended procedure name(RNAV(GNSS) → RNP).

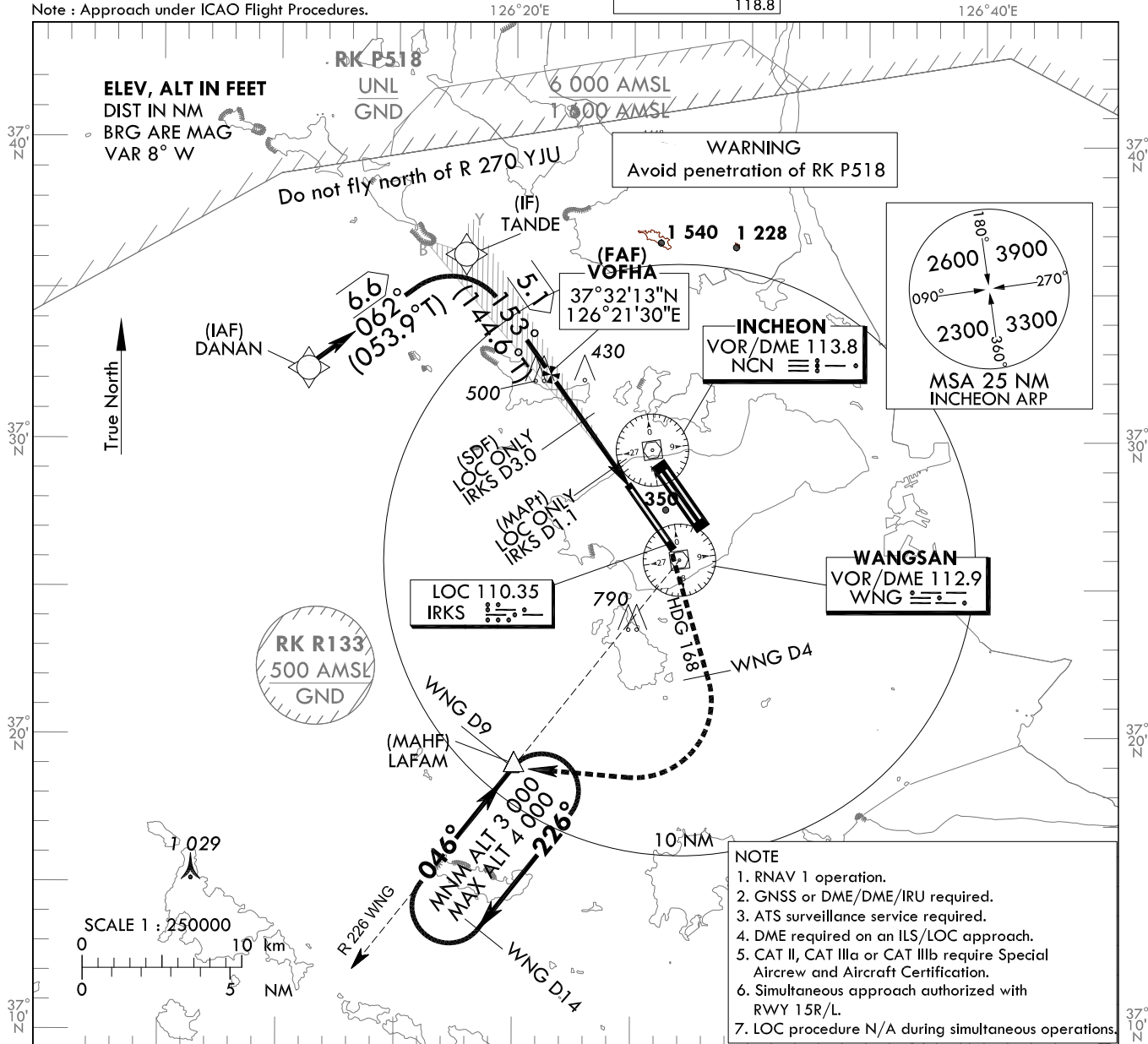
**INSTRUMENT
APPROACH
CHART - ICAO**

AERODROME ELEV 23 ft
HEIGHTS RELATED TO
THR RWY 16 - ELEV 23 ft

SEOUL APP 119.75
119.1
INCHEON TWR 118.2
118.8

**SEOUL/Incheon Intl(RKSI)
ILS or LOC RWY 16
CAT II & III**

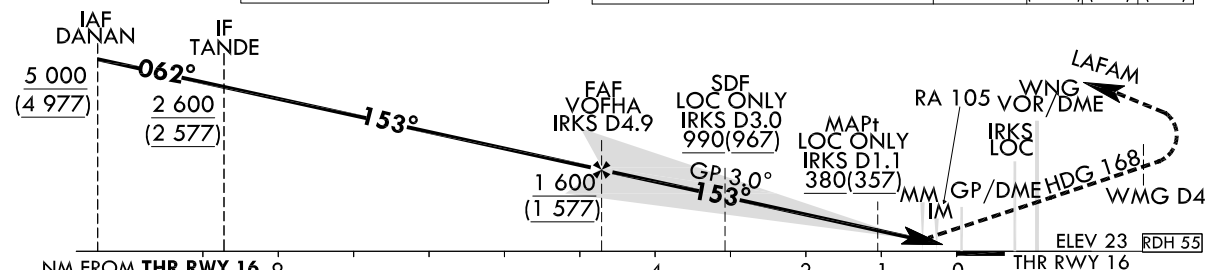
Note : Approach under ICAO Flight Procedures.



- NOTE**
1. RNAV 1 operation.
 2. GNSS or DME/DME/IRU required.
 3. ATS surveillance service required.
 4. DME required on an ILS/LOC approach.
 5. CAT II, CAT IIIa or CAT IIIb require Special Aircrew and Aircraft Certification.
 6. Simultaneous approach authorized with RWY 15R/L.
 7. LOC procedure N/A during simultaneous operations.

TRANSITION ALT 14 000
TRANSITION LVL FL 140

RECOMMENDED PROFILE	DME IRKS	4	3	2
Final Approach Gradient 5.24%, 318 ft/NM	ALT(HGT)	1 310 (1 287)	986 (963)	663 (640)



CATEGORY	DA(DH)/MDA(MDH)	A					B					C					D					DL				
		A					B					C					D					DL				
Straight-in	CAT-I (CG 2.5%)	FULL	436 (413)					1 200 m					1 900 m					RVR 550 m, VIS 800 m								
		ALS INOP	223 (200)					1 200 m					900 m					1 600 m								
	CAT-I (CG 4.0%)	FULL	380 (357)					1 200 m					900 m					1 600 m								
		ALS INOP	123(100)					300 m					300 m ¹⁾ /350 m													
	CAT II		-					175 m					75 m ²⁾ /125 m													
	CAT IIIa		-																							

MISSED APPROACH
Climb to 500 ft on RWY Heading then RIGHT turn on HDG 168° to WNG 4 DME, continue climb to 3 000 ft RIGHT turn direct to LAFAM. Hold as published.

NOTE

1. Missed approach turn limited to 210 kt IAS maximum.
2. Missed approach minimum climb gradient of 2.5% to 3 000 ft (DH 413), 4% to 3 000 ft (DH 200 or 100).

1) For CAT D/DL aeroplane conducting an autoland.
2) Aeroplane use Fail-operational system.

* Timing Not authorized for defining MAPt.
* Circling Not authorized.

Change : Amended ILS plan view symbol.

SEOUL/Incheon Intl(RKSI)
ILS or LOC RWY 16
CAT II & III

AERONAUTICAL DATA TABULATION

ILS/LOC Approach to RWY 16 from DANAN		
Fix / Point		Coordinates
DANAN(IAF)		37°32'26.0"N 126°11'04.0"E
TANDE(IF)	BRG 061.75°/6.64 NM	37°36'21.0"N 126°17'48.8"E
VOFHA (FAF)	BRG 152.51°/4.90 NM IRKS	37°32'12.9"N 126°21'30.4"E
D3.0 IRKS(SDF LOC ONLY)	BRG 152.51°/3.00 NM IRKS	37°30'40.7"N 126°22'52.6"E
D1.1 IRKS(MAPt LOC ONLY)	BRG 152.51°/1.10 NM IRKS	37°29'07.6"N 126°24'15.5"E
THR RWY16		37°28'22.11"N 126°24'56.05"E
IRKS DME		37°28'11.4"N 126°24'59.7"E
WNG VOR/DME		37°25'58.6"N 126°27'00.0"E
Climb to 500 ft	HDG 153	-
D4 WNG		-
LAFAM	BRG 282.42°/9.00 NM WNG	37°18'55.0"N 126°19'59.0"E

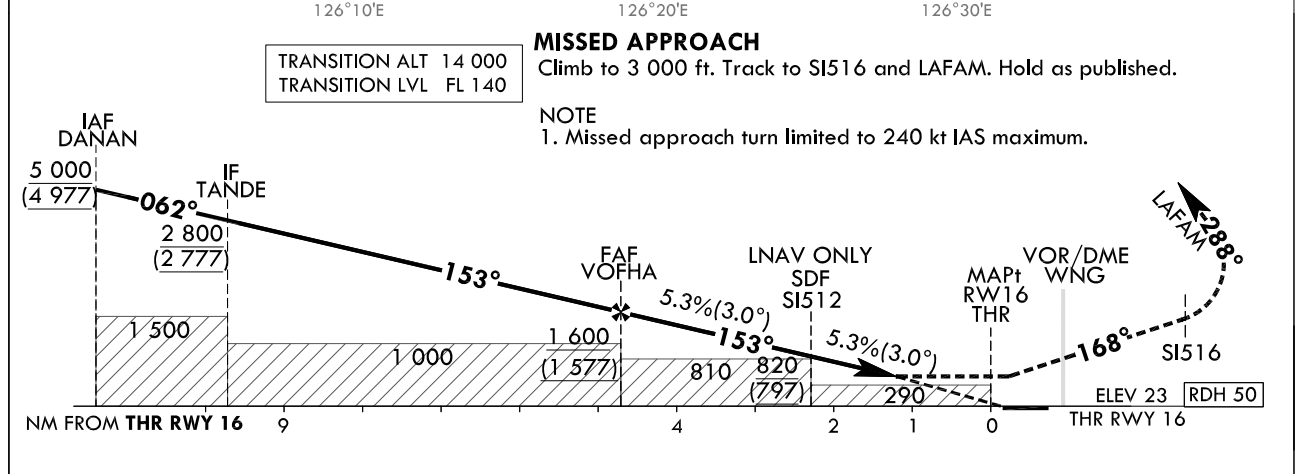
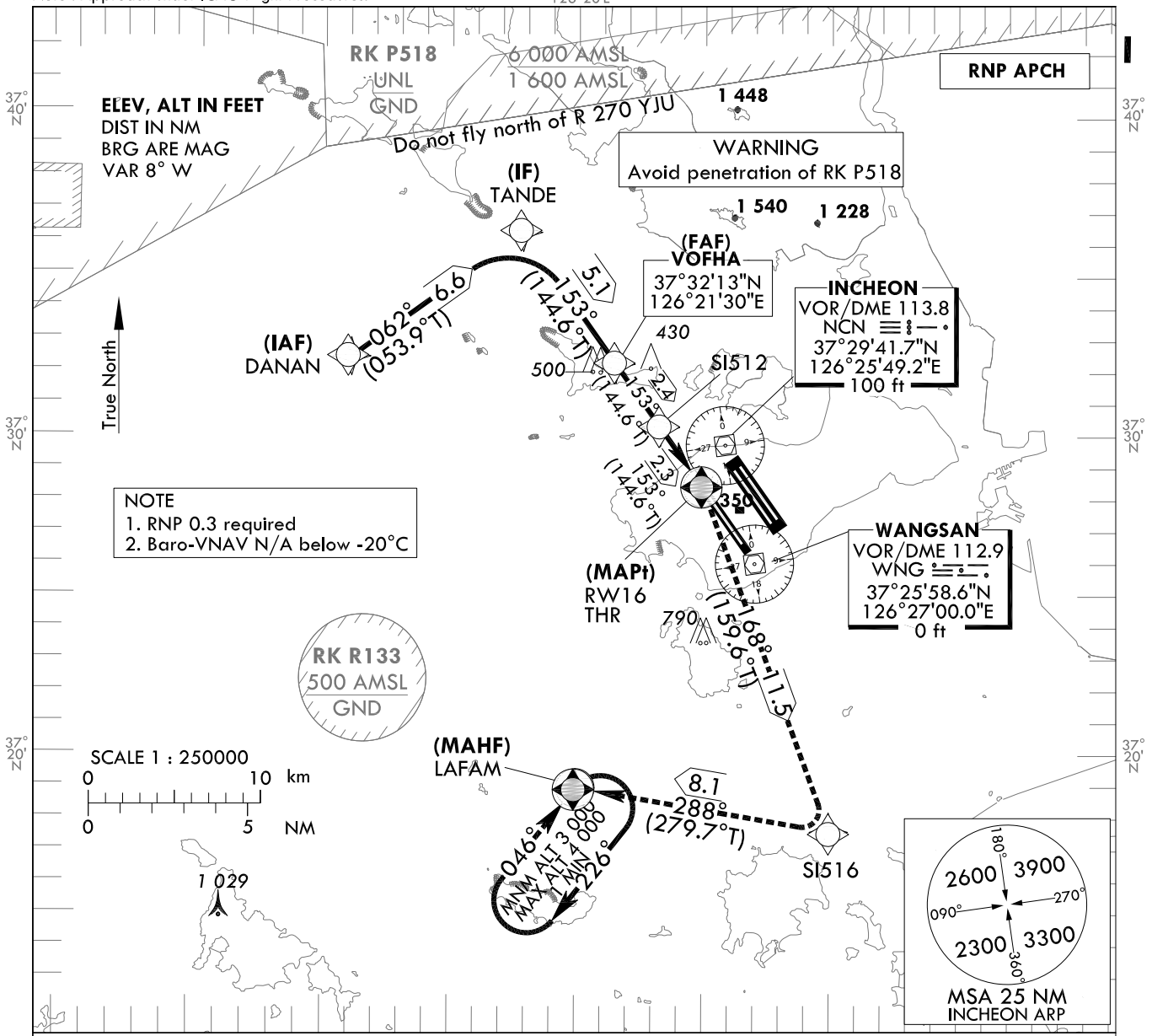
**INSTRUMENT
APPROACH
CHART - ICAO**

AERODROME ELEV 23 ft
HEIGHTS RELATED TO
THR RWY 16 - ELEV 23 ft

SEOUL APP 119.75
119.1
INCHEON TWR 118.2
118.8

**SEOUL/Incheon Intl(RKSI)
RNP RWY 16**

Note : Approach under ICAO Flight Procedures.



CATEGORY		MDA(H)/DA(H)	A	B	C	D	Knots						
LNAV	FULL	520 (497)		1 500 m			Rate of descent	V/V fpm	324	486	648	810	972
	ALS INOP			2 300 m									
LNAV/VNAV	FULL	430 (407)		1 200 m			* Timing Not authorized for defining MAPt. * Circling Not authorized.						
	ALS INOP			1 900 m									

Change : Amended phrases(RK R518 → P518).

AERONAUTICAL DATA TABULATION

Instrument Approach Procedure Coding Tables

RNP RWY 16

Serial Number	Path Descriptor	Waypoint Identifier	Fly-over	Course/Track °M(°T)	Distance (NM)	Turn direction	Altitude (ft)	Speed (kt)	Coordinates	VPA/TCH	Navigation specification	Remarks
001	IF	DANAN	-	-	-	-	+5 000	-	37°32'26.0"N 126°11'04.0"E (R 291 NCN/D12, R 305 WNG/D14)	-	RNP APCH	IAF
002	TF	TANDE	-	062 (053.9)	6.6	-	+2 800	-	37°36'21.0"N 126°17'48.8"E (R 324 NCN/D9, R 333 WNG/D13)	-	RNP APCH	IF
003	TF	VOFHA	-	153 (144.6)	5.1	-	+1 600	-	37°32'12.9"N 126°21'30.4"E (R 314 NCN/D4, R 333 WNG/D8)	-	RNP APCH	FAF
004	TF	SI512	-	153 (144.6)	2.4	-	+820	-	37°30'14.8"N 126°23'15.7"E (R 293 NCN/D2, R 333 WNG/D5)	-	RNP APCH	SDF
005	TF	RW16	Y	153 (144.6)	2.3	-	+520	-	37°28'22.1"N 126°24'56.0"E (R 216 NCN/D2, R 333 WNG/D3)	-3.01/50	RNP APCH	MAPt
006	TF	SI516	-	168 (159.6)	11.5	-	-	-240	37°17'34.0"N 126°29'57.5"E (R 173 NCN/D13, R 172 WNG/D9)	-	RNP APCH	-
007	TF	LAFAM	Y	288 (279.7)	8.1	-	+3 000	-240	37°18'55.0"N 126°19'59.0"E (R 211 NCN/D12, R 226 WNG/D9)	-	RNP APCH	-
008	HM	LAFAM	Y	046 (038.4)	-	R	-4 000 +3 000	-	37°18'55.0"N 126°19'59.0"E (R 211 NCN/D12, R 226 WNG/D9)	-	RNP APCH	1 min (Outbound timing)

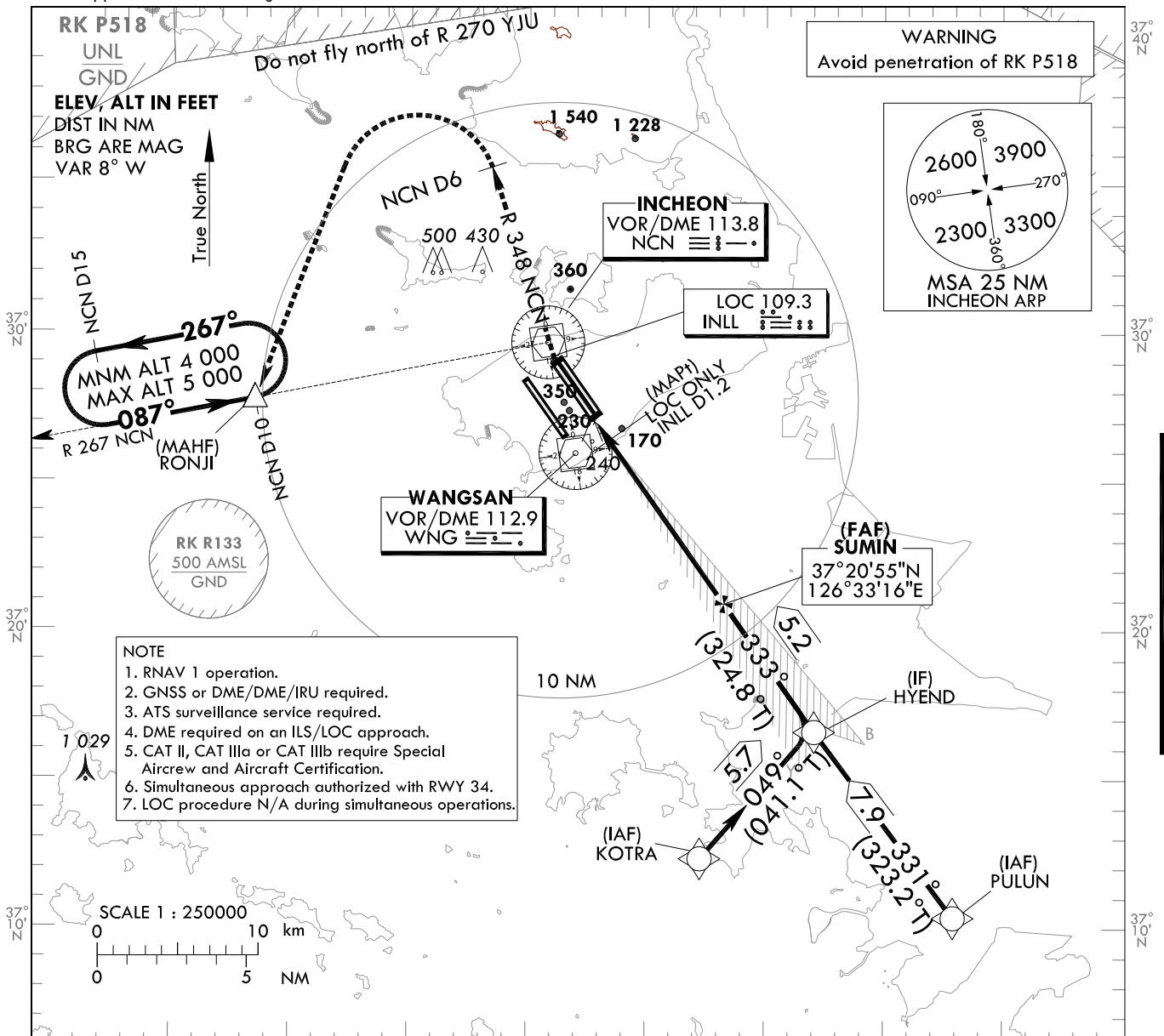
**INSTRUMENT
APPROACH
CHART - ICAO**

AERODROME ELEV 23 ft
HEIGHTS RELATED TO
THR RWY 33L - ELEV 23 ft

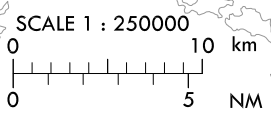
SEOUL APP 119.75
119.1
INCHEON TWR 118.2
118.8

**SEOUL/Incheon Intl(RKSI)
ILS or LOC RWY 33L
CAT II & III**

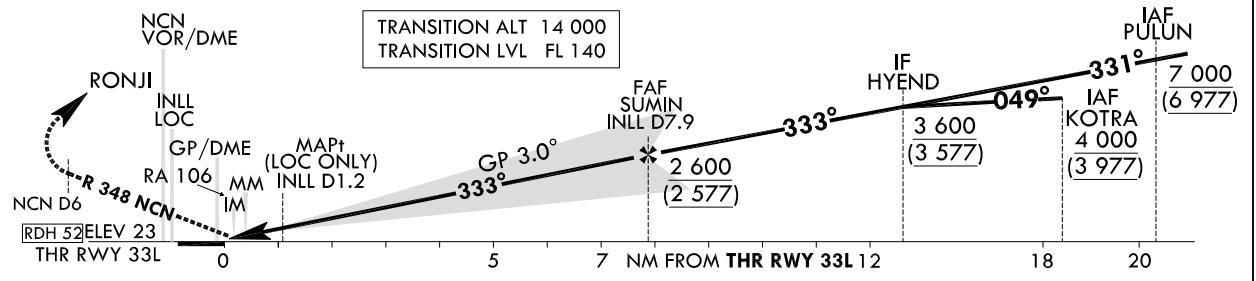
Note : Approach under ICAO Flight Procedures.



NOTE
1. RNAV 1 operation.
2. GNSS or DME/DME/IRU required.
3. ATS surveillance service required.
4. DME required on an ILS/LOC approach.
5. CAT II, CAT IIIa or CAT IIIb require Special Aircrew and Aircraft Certification.
6. Simultaneous approach authorized with RWY 34.
7. LOC procedure N/A during simultaneous operations.



RECOMMENDED PROFILE		DME INLL	7	6	5	4	3	2
Final Approach Gradient 5.35%, 325 ft/NM		ALT(HGT)	2 299 (2 276)	1 974 (1 951)	1 649 (1 626)	1 323 (1 300)	998 (975)	673 (650)



CATEGORY	DA(DH)/MDA(MDH)	A					B		C		D		DL	
		FULL		ALS INOP		FULL		ALS INOP		FULL		ALS INOP		
Straight-in	CAT-I (CG 2.5%)	455 (432)				1 300 m								
		223 (200)				RVR 550 m, VIS 800 m								
	CAT-I (CG 4.0%)	430 (407)				1 200 m								
		123(100)				300 m				300 m ¹⁾ /350 m				
	CAT II					175 m								
	CAT IIIa					75 m ²⁾ /125 m								

MISSED APPROACH
Climb to 500 ft on RWY heading then turn RIGHT to intercept and follow R 348 NCN to 6 DME, continue climb to 4 000 ft LEFT turn direct to RONJI. Hold as published.
NOTE
1. Missed approach turn limited to 210 kt IAS maximum.
2. Missed approach minimum climb gradient of 2.5% to 4 000 ft(DH 432), 4% to 2 000 ft(DH 200 or 100).
* Timing Not authorized for defining MAPt.
* Circling Not authorized.

1) For CAT D/DL aeroplane conducting an autoland.
2) Aeroplane use Fail-operational system.

Change : Amended ILS plan view symbol.

SEOUL/Incheon Intl(RKSI)
ILS or LOC RWY 33L
CAT II & III

AERONAUTICAL DATA TABULATION

ILS/LOC Approach to RWY 33L from PULUN to HYEND(IF)	
Fix / Point	Coordinates
PULUN(IAF)	37°10'22.2"N 126°42'55.7"E
HYEND(IF)	37°16'41.2"N 126°37'01.0"E

ILS/LOC Approach to RWY 33L from KOTRA to HYEND(IF)	
Fix / Point	Coordinates
KOTRA(IAF)	37°12'21.3"N 126°32'17.4"E
HYEND(IF)	37°16'41.2"N 126°37'01.0"E

ILS/LOC Approach to RWY 33L from HYEND(IF) to MAHF	
Fix / Point	Coordinates
SUMIN(FAF) BRG 332.69°/7.92 NM INLL	37°20'55.1"N 126°33'16.4"E
D1.2 INLL(MAPt) (LOC ONLY) BRG 332.69°/1.20 NM INLL	37°26'24.4"N 126°28'24.3"E
THR RWY 33L	37°27'15.21"N 126°27'39.08"E
INLL DME	37°27'25.4"N 126°27'36.0"E
NCN VOR/DME	37°29'47.1"N 126°25'49.2"E
Climb to 500 ft HDG 333	-
D6 NCN	-
RONJI BRG 211.55°/10.00 NM NCN	37°27'47.0"N 126°13'29.0"E

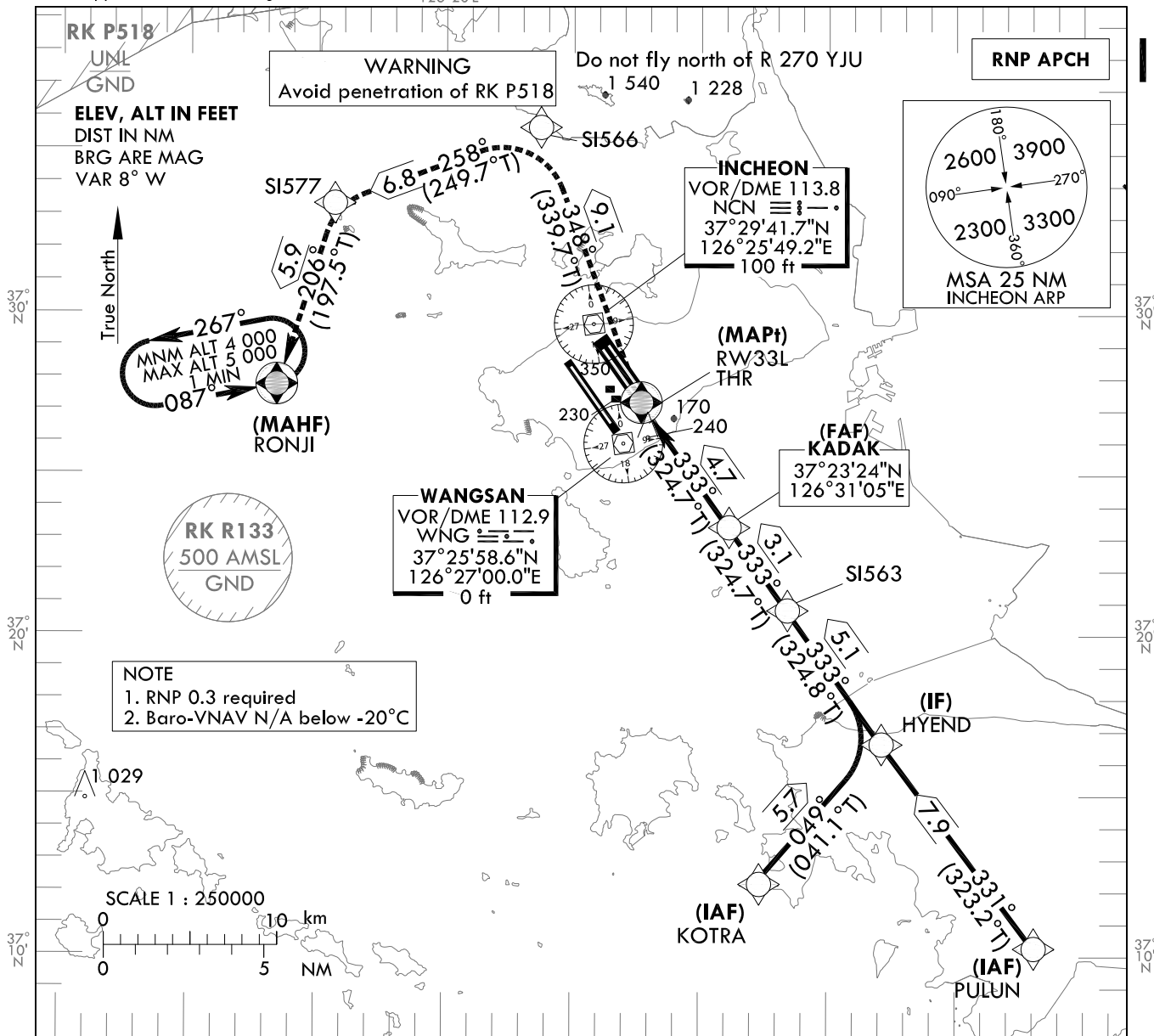
**INSTRUMENT
APPROACH
CHART - ICAO**

AERODROME ELEV 23 ft
HEIGHTS RELATED TO
THR RWY 33L - ELEV 23 ft

SEOUL APP 119.75
119.1
INCHEON TWR 118.2
118.8

SEOUL/Incheon Intl(RKSI)
RNP RWY 33L

Note : Approach under ICAO Flight Procedures. 126°20'E



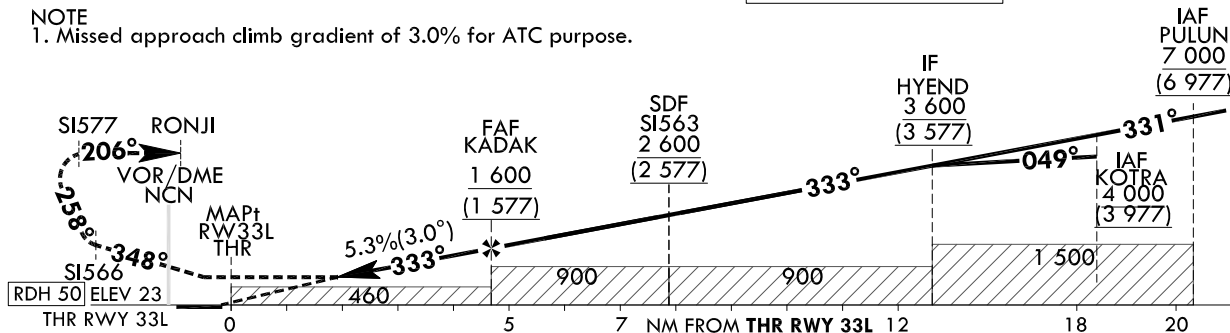
NOTE
1. RNP 0.3 required
2. Baro-VNAV N/A below -20°C

MISSED APPROACH

Climb to 4 000 ft. Track to SI566, SI577 and RONJI. Hold as published.

TRANSITION ALT 14 000
TRANSITION LVL FL 140

NOTE
1. Missed approach climb gradient of 3.0% for ATC purpose.



CATEGORY		MDA(H)/DA(H)	A	B	C	D	Knots						
LNAV	FULL	510 (487)		1 500 m			Rate of descent	V/V fpm	323	485	647	809	970
	ALS INOP			2 300 m									
LNAV/VNAV	FULL	430 (407)		1 200 m			* Timing Not authorized for defining MAPt. * Circling Not authorized.						
	ALS INOP			1 900 m									

Change : Amended procedure name(RNAV(GNSS)) → RNP).

SEOUL/Incheon Intl(RKSI)
RNP RWY 33L

AERONAUTICAL DATA TABULATION

Instrument Approach Procedure Coding Tables

RNP RWY 33L - via PULUN to HYEND(IF)

Serial Number	Path Descriptor	Waypoint Identifier	Fly-over	Course/Track °M(°T)	Distance (NM)	Turn direction	Altitude (ft)	Speed (kt)	Coordinates	VPA/TCH	Navigation specification	Remarks
001	IF	PULUN	-	-	-	-	+7 000	-	37°10'22.2"N 126°42'55.7"E (R 153 NCN/D24, R 149 WNG/D20)	-	RNP APCH	IAF
002	TF	HYEND	-	331 (323.2)	7.9	-	+3 600	-	37°16'41.2"N 126°37'01.0"E (R 153 NCN/D16, R 147 WNG/D12)	-	RNP APCH	IF

RNP RWY 33L - via KOTRA to HYEND(IF)

Serial Number	Path Descriptor	Waypoint Identifier	Fly-over	Course/Track °M(°T)	Distance (NM)	Turn direction	Altitude (ft)	Speed (kt)	Coordinates	VPA/TCH	Navigation specification	Remarks
001	IF	KOTRA	-	-	-	-	+4 000	-	37°12'21.3"N 126°32'17.4"E (R 171 NCN/D18, R 171 WNG/D14)	-	RNP APCH	IAF
002	TF	HYEND	-	049 (041.1)	5.7	-	+3 600	-	37°16'41.2"N 126°37'01.0"E (R 153 NCN/D16, R 147 WNG/D12)	-	RNP APCH	IF

RNP RWY 33L - via HYEND(IF) to MAHF

Serial Number	Path Descriptor	Waypoint Identifier	Fly-over	Course/Track °M(°T)	Distance (NM)	Turn direction	Altitude (ft)	Speed (kt)	Coordinates	VPA/TCH	Navigation specification	Remarks
002	TF	HYEND	-	-	-	-	+3 600	-	37°16'41.2"N 126°37'01.0"E (R 153 NCN/D16, R 147 WNG/D12)	-	RNP APCH	IF
003	TF	S1563	-	333 (324.8)	5.1	-	+2 600	-	37°20'49.5"N 126°33'21.4"E (R 154 NCN/D11, R 143 WNG/D7)	-	RNP APCH	SDF
004	TF	KADAK	-	333 (324.7)	3.1	-	+1 600	-	37°23'23.8"N 126°31'04.6"E (R 154 NCN/D8, R 136 WNG/D4)	-	RNP APCH	FAF
005	TF	RW33L	Y	333 (324.7)	4.7	-	+510	-	37°27'15.2"N 126°27'39.08"E (R 157 NCN/D3, R 030 WNG/D1)	-3.01/50	RNP APCH	MAPt
006	TF	S1566	-	348 (339.7)	9.1	-	-	-	37°35'45.5"N 126°23'42.2"E (R 352 NCN/D6, R 353 WNG/D10)	-	RNP APCH	-
007	TF	S1577	-	258 (249.7)	6.8	-	-	-	37°33'23.8"N 126°15'42.3"E (R 303 NCN/D9, R 317 WNG/D12)	-	RNP APCH	-
008	TF	RONJI	Y	206 (197.5)	5.9	-	+4 000	-	37°27'47.0"N 126°13'29.0"E (R 267 NCN/D10, R 288 WNG/D11)	-	RNP APCH	-
009	H/M	RONJI	Y	087 (078.9)	-	L	-5 000 +4 000	-	37°27'47.0"N 126°13'29.0"E (R 267 NCN/D10, R 288 WNG/D11)	-	RNP APCH	1 min (Outbound timing)

Change : Amended procedure name(RNAV(GNSS)) → RNP).

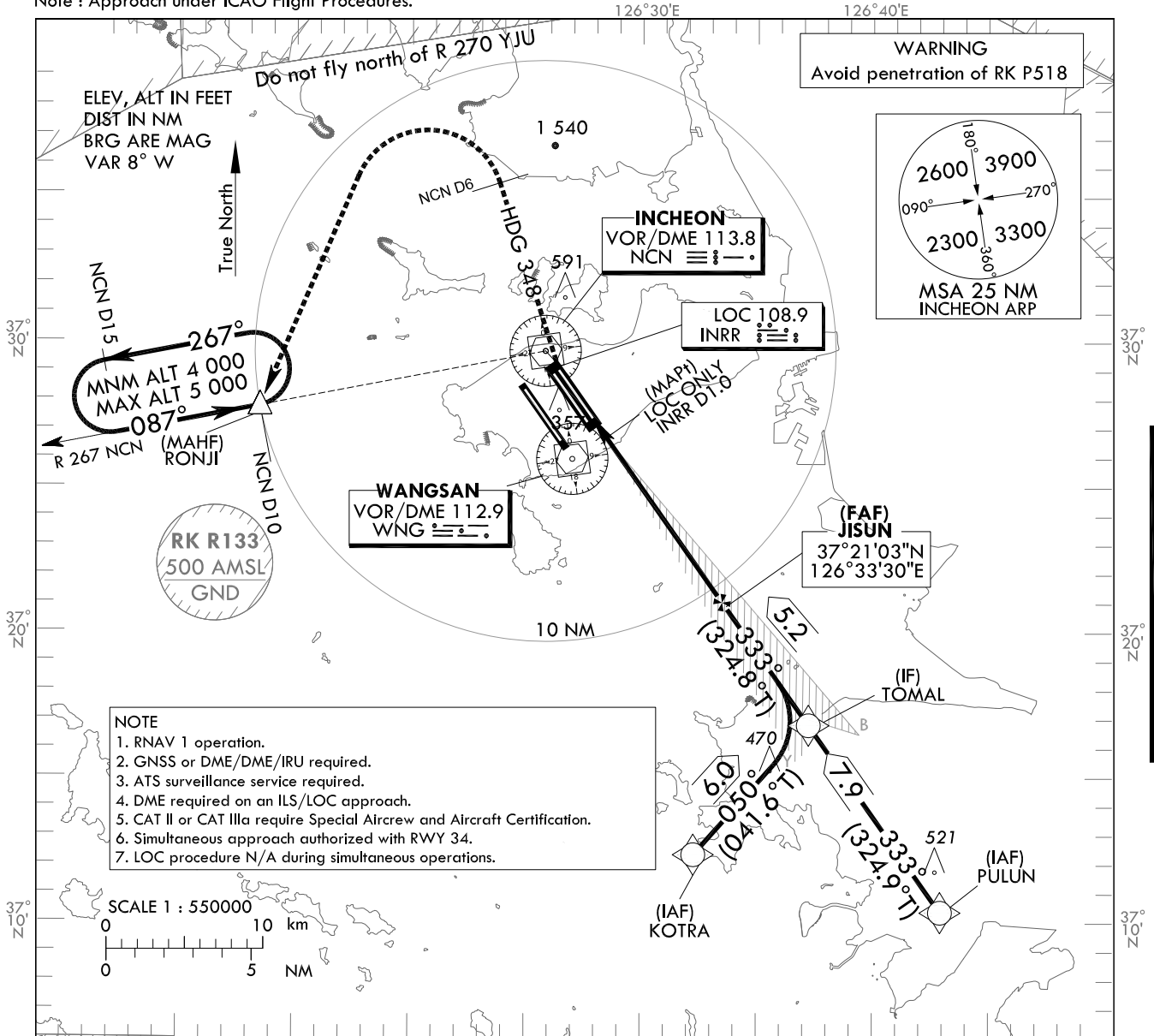
INSTRUMENT APPROACH CHART - ICAO

AERODROME ELEV 23 ft
HEIGHTS RELATED TO
THR RWY 33R - ELEV 23 ft

SEOUL APP 119.75
119.1
INCHEON TWR 118.2
118.8

SEOUL/Incheon Intl(RKSI)
ILS or LOC RWY 33R
CAT II & III

Note : Approach under ICAO Flight Procedures.



NOTE
1. RNAV 1 operation.
2. GNSS or DME/DME/IRU required.
3. ATS surveillance service required.
4. DME required on an ILS/LOC approach.
5. CAT II or CAT IIIa require Special Aircrew and Aircraft Certification.
6. Simultaneous approach authorized with RWY 34.
7. LOC procedure N/A during simultaneous operations.

RECOMMENDED PROFILE		DME INRR						TRANSITION ALT 14 000		TRANSITION LVL FL 140		
Final Approach Gradient 5.35%, 325 ft ft/NM		7	6	5	4	3	2					
		ALT(HGT)	2 299 (2 276)	1 974 (1 951)	1 649 (1 626)	1 323 (1 300)	998 (975)	673 (650)				
CATEGORY		DA(DH)/MDA(MDH)	A	B	C	D	DL	MISSED APPROACH				
Straight -in	CAT-I (CG 2.5%)	FULL (438)			1 300 m			Climb to 500 ft on RWY heading then turn RIGHT on HDG 348° to NCN 6 DME, continue climb to 4 000 ft LEFT turn direct to RONJI. Hold as published.				
		ALS INOP (200)			2 000 m			NOTE				
	CAT-I (CG 4.0%)	FULL (200)			RVR 550 m, VIS 800 m			1. Missed approach turn limited to 210 kt IAS maximum.				
		ALS INOP (407)			1 200 m			2. Missed approach minimum climb gradient of 2.5% to 4 000 ft (DH 438), 4% to 2 000ft (DH 200 or 100).				
	LOC	FULL (407)			1 200 m			1) For CAT D/DL aeroplane conducting an autoland.				
		ALS INOP			1 900 m			2) Aeroplane use fail-operational system.				
	CAT II	123(100)			300 m		300 m ¹⁾ / 350 m	* Timing Not authorized for defining MAPt.				
	CAT IIIa	-			175 m			* Circling Not authorized.				
	CAT IIIb	-			75 m ²⁾ / 125 m							

Change : Amended ILS plan view symbol.

SEOUL/Incheon Intl(RKSI)
ILS or LOC RWY 33R
CAT II & III

AERONAUTICAL DATA TABULATION

ILS/LOC Approach to RWY 33R from PULUN to TOMAL(IF)	
Fix / Point	Coordinates
PULUN(IAF)	37°10'22.2"N 126°42'55.7"E
TOMAL(IF)	37°16'49.0"N 126°37'14.8"E

ILS/LOC Approach to RWY 33R from KOTRA to TOMAL(IF)	
Fix / Point	Coordinates
KOTRA(IAF)	37°12'21.3"N 126°32'17.4"E
TOMAL(IF)	37°16'49.0"N 126°37'14.8"E

ILS/LOC Approach to RWY 33R from TOMAL(IF) to MAHF	
Fix / Point	Coordinates
JISUN(FAF) BRG 332.69°/7.92NM INRR	37°21'02.8"N 126°33'30.1"E
D1.0 INRR(MAPt LOC ONLY) BRG 332.69°/0.98NM INRR	37°26'43.0"N 126°28'28.4"E
THR RWY 33R	37°27'22.97"N 126°27'52.82"E
INRR DME	37°27'33.2"N 126°27'49.7"E
NCN VOR/DME	37°29'41.7"N 126°25'49.2"E
Climb to 500 ft HDG 333	-
D6 NCN HDG 348	-
RONJI BRG 267.27°/10NM NCN	37°27'47.0"N 126°13'29.0"E

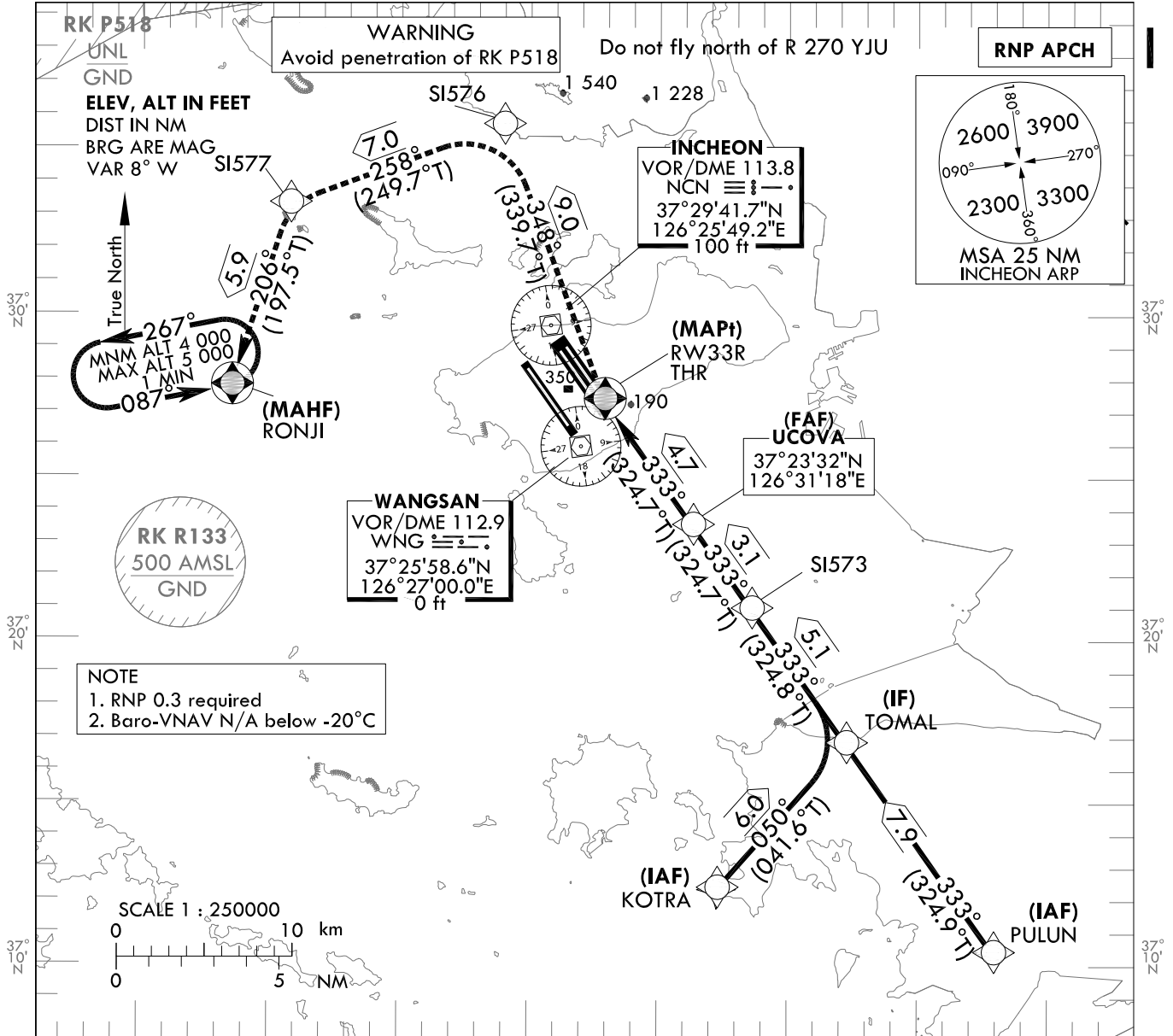
**INSTRUMENT
APPROACH
CHART - ICAO**

AERODROME ELEV 23 ft
HEIGHTS RELATED TO
THR RWY 33R - ELEV 23 ft

SEOUL APP 119.75
119.1
INCHEON TWR 118.2
118.8

SEOUL/Incheon Intl(RKSI)
RNP RWY 33R

Note : Approach under ICAO Flight Procedures.



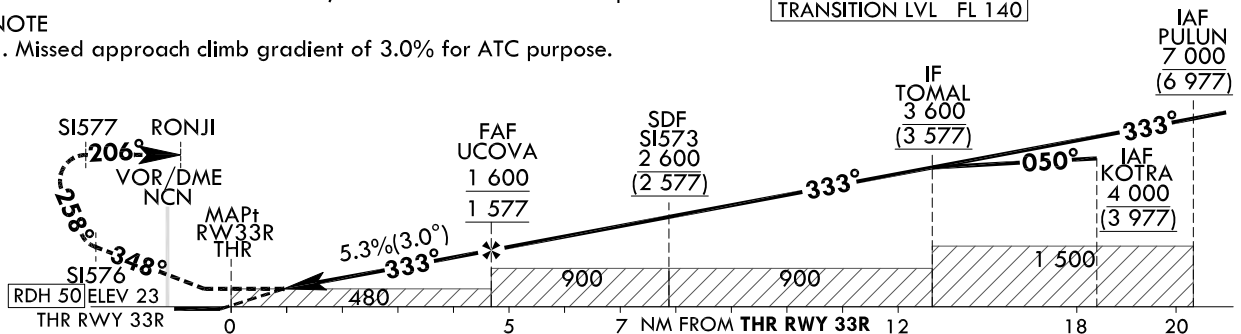
MISSED APPROACH

Climb to 4 000 ft. Track to SI576, SI577 and RONJI. Hold as published.

NOTE

1. Missed approach climb gradient of 3.0% for ATC purpose.

TRANSITION ALT 14 000
TRANSITION LVL FL 140



CATEGORY		MDA(H)/DA(H)	A	B	C	D	Knots					
LNAV	FULL	480 (457)		1 400 m			Rate of descent V/V fpm	60	90	120	150	180
	ALS INOP			2 100 m				323	485	647	809	970
LNAV/VNAV	FULL	430 (407)		1 200 m			* Timing Not authorized for defining MAPt. * Circling Not authorized.					
	ALS INOP			1 900 m								

Change : Amended procedure name(RNAV(GNSS) → RNP).

SEOUL/Incheon Intl(RKSI)
RNP RWY 33R

AERONAUTICAL DATA TABULATION

Instrument Approach Procedure Coding Tables

RNP RWY 33R - via PULUN to TOMAL(IF)

Serial Number	Path Descriptor	Waypoint Identifier	Fly-over	Course/Track °M(°T)	Distance (NM)	Turn direction	Altitude (ft)	Speed (kt)	Coordinates	VPA/TCH	Navigation specification	Remarks
001	IF	PULUN	-	-	-	-	+7 000	-	37°10'22.2"N 126°42'55.7"E (R 153 NCN/D24, R 149 WNG/D20)	-	RNP APCH	IAF
002	TF	TOMAL	-	333 (324.9)	7.9	-	+3 600	-	37°16'49.0"N 126°37'14.8"E (R 153 NCN/D16, R 146 WNG/D12)	-	RNP APCH	IF

RNP RWY 33R - via KOTRA to TOMAL(IF)

Serial Number	Path Descriptor	Waypoint Identifier	Fly-over	Course/Track °M(°T)	Distance (NM)	Turn direction	Altitude (ft)	Speed (kt)	Coordinates	VPA/TCH	Navigation specification	Remarks
001	IF	KOTRA	-	-	-	-	+4 000	-	37°12'21.3"N 126°32'17.4"E (R 171 NCN/D18, R 171 WNG/D14)	-	RNP APCH	IAF
002	TF	TOMAL	-	050 (041.6)	6.0	-	+3 600	-	37°16'49.0"N 126°37'14.8"E (R 153 NCN/D16, R 146 WNG/D12)	-	RNP APCH	IF

RNP RWY 33R - via TOMAL(IF) to MAHF

Serial Number	Path Descriptor	Waypoint Identifier	Fly-over	Course/Track °M(°T)	Distance (NM)	Turn direction	Altitude (ft)	Speed (kt)	Coordinates	VPA/TCH	Navigation specification	Remarks
002	TF	TOMAL	-	-	-	-	+3 600	-	37°16'49.0"N 126°37'14.8"E (R 153 NCN/D16, R 146 WNG/D12)	-	RNP APCH	IF
003	TF	S1573	-	333 (324.8)	5.1	-	+2 600	-	37°20'57.2"N 126°33'35.1"E (R 153 NCN/D11, R 142 WNG/D7)	-	RNP APCH	SDF
004	TF	UCOVA	-	333 (324.7)	3.1	-	+1 600	-	37°23'31.5"N 126°31'18.4"E (R 153 NCN/D8, R 133 WNG/D4)	-	RNP APCH	FAF
005	TF	RW33R	Y	333 (324.7)	4.7	-	+480	-	37°27'22.97"N 126°27'52.82"E (R 153 NCN/D3, R 034 WNG/D2)	-3.01/50	RNP APCH	MAPt
006	TF	S1576	-	348 (339.7)	9.0	-	-	-	37°35'50.0"N 126°23'57.5"E (R 354 NCN/D6, R 354 WNG/D10)	-	RNP APCH	-
007	TF	S1577	-	258 (249.7)	7.0	-	-	-	37°33'23.8"N 126°15'42.3"E (R 303 NCN/D9, R 317 WNG/D12)	-	RNP APCH	-
008	TF	RONJI	Y	206 (197.5)	5.9	-	+4 000	-	37°27'47.0"N 126°13'29.0"E (R 267 NCN/D10, R 288 WNG/D11)	-	RNP APCH	-
009	HM	RONJI	Y	087 (078.9)	-	L	-5 000 +4 000	-	37°27'47.0"N 126°13'29.0"E (R 267 NCN/D10, R 288 WNG/D11)	-	RNP APCH	1 min (Outbound timing)

Change : Amended procedure name(RNAV(GNSS) → RNP).

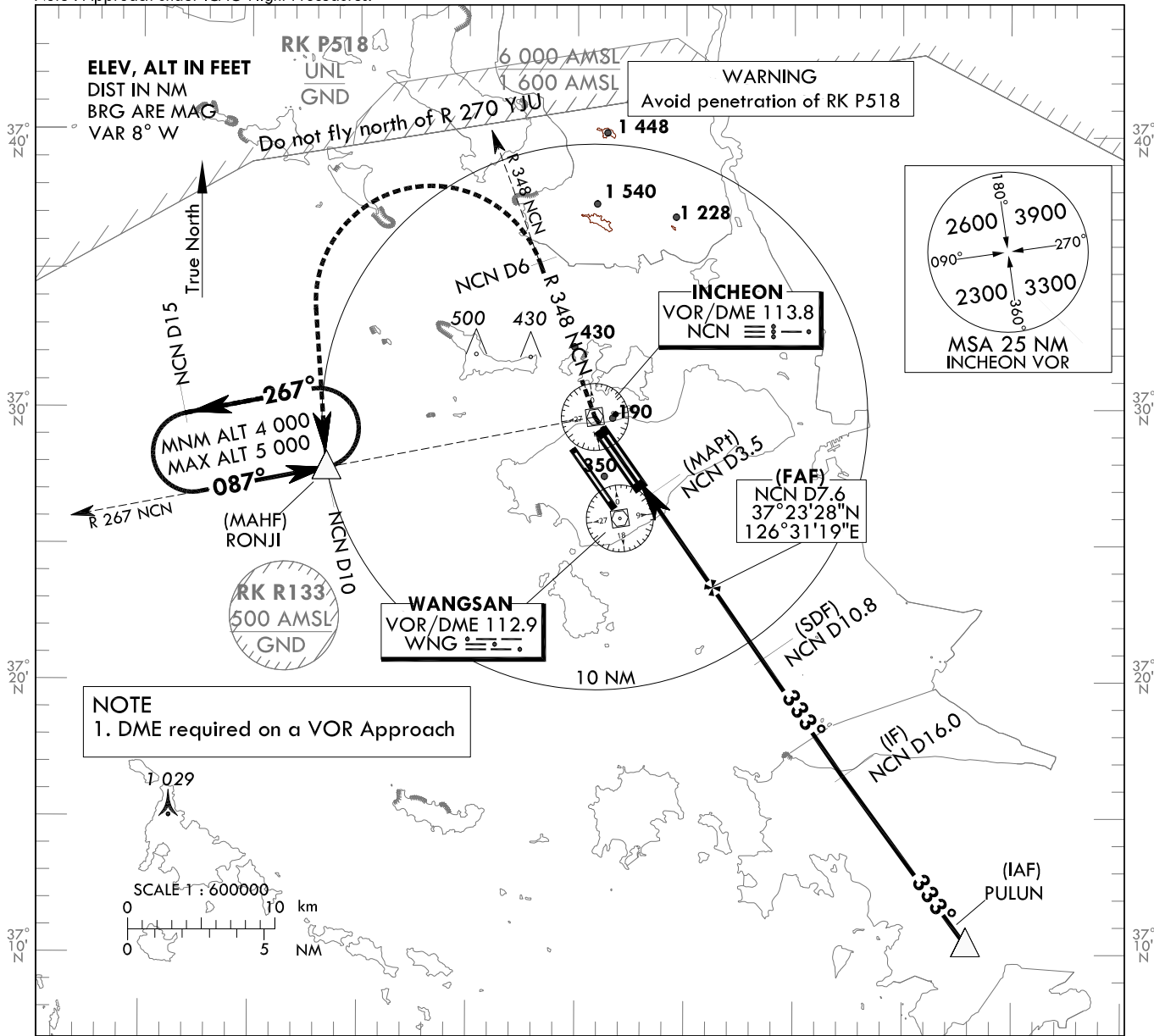
**INSTRUMENT
APPROACH
CHART - ICAO**

AERODROME ELEV 23 ft
HEIGHTS RELATED TO
THR RWY 33R - ELEV 23 ft

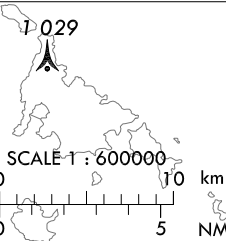
SEOUL APP 119.75
119.1
INCHEON TWR 118.2
118.8

**SEOUL/Incheon Intl(RKSI)
VOR
RWY 33R**

Note : Approach under ICAO Flight Procedures.



NOTE
1. DME required on a VOR Approach

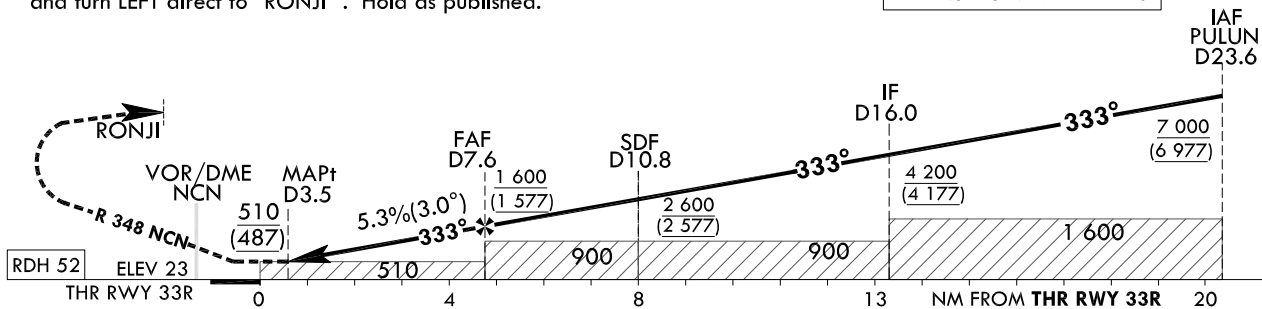


RECOMMENDED PROFILE	DME KIP	7	6	5	4
Final Approach Gradient 5.3%(319.9 ft/NM)	ALT(HGT)	1 408(1 385)	1 088(1 065)	768(746)	449(426)

MISSED APPROACH

Climb to 4 000 ft via "NCN" VOR then RIGHT turn on R 348 NCN to 6 DME and turn LEFT direct to "RONJI". Hold as published.

TRANSITION ALT 14 000
TRANSITION LVL FL 140



CATEGORY	MDA(MDH)	A	B	C	D	Knots							
						60	90	120	150	180			
Straight-in	FULL	510 (487)	1 600 m				Rate of descent	V/V fpm	320	480	640	800	960
	ALS INOP		2 300 m					* Timing Not authorized for defining MAPt. * Circling Not authorized.					

SEOUL/Incheon Intl(RKSI)

VOR

RWY 33R

AERONAUTICAL DATA TABULATION

VOR Approach to RWY 33R from PULUN		
Fix / Point		Coordinates
PULUN(IAF)		37°10'22.2"N 126°42'55.7"E
D16 NCN(IF)	BRG 332.56°/7.64NM	37°16'35.5"N 126°37'22.8"E
D10.8 NCN(SDF)	BRG 333.00°/10.80NM NCN	37°20'51.0"N 126°33'37.9"E
D7.6 NCN(FAF)	BRG 333.00°/7.60NM NCN	37°23'28.2"N 126°31'19.3"E
D3.5 NCN(MAPt)	BRG 333.00°/3.50NM NCN	37°26'49.6"N 126°28'21.5"E
THR RWY33R	Final approach descent angle 3°	37°27'22.97"N 126°27'52.82"E
NCN VOR/DME		37°29'41.7"N 126°25'49.2"E
D6 NCN	R 348 NCN/6.00NM NCN	37°35'19.7"N 126°23'12.9"E
RONJI	BRG 183.87°/10.00NM NCN	37°27'47.0"N 126°13'29.0"E

Change : Amended coordinate format.

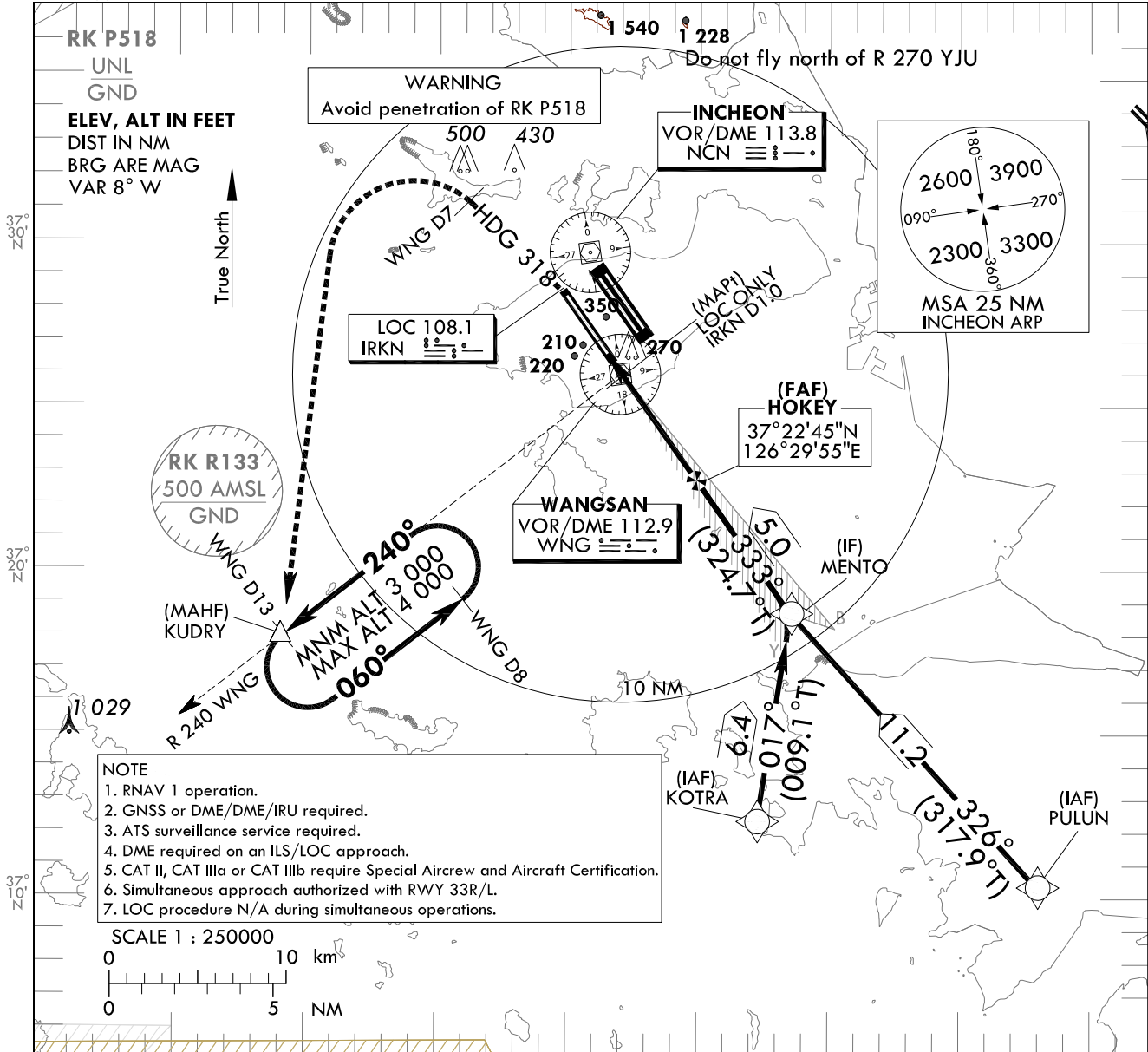
**INSTRUMENT
APPROACH
CHART - ICAO**

AERODROME ELEV 23 ft
HEIGHTS RELATED TO
THR RWY 34 - ELEV 23 ft

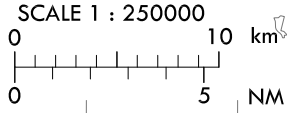
SEOUL APP 119.75
119.1
INCHEON TWR 118.2
118.8

**SEOUL/Incheon Intl(RKSI)
ILS or LOC RWY 34
CAT II & III**

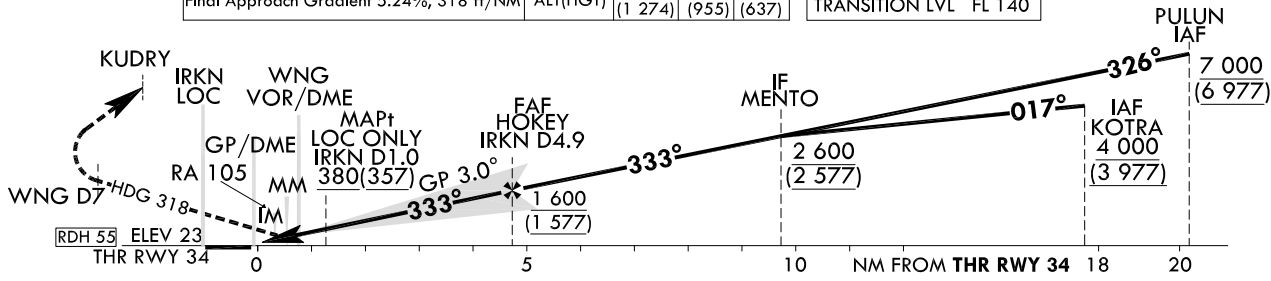
Note : Approach under ICAO Flight Procedures.



- NOTE**
1. RNAV 1 operation.
 2. GNSS or DME/DME/IRU required.
 3. ATS surveillance service required.
 4. DME required on an ILS/LOC approach.
 5. CAT II, CAT IIIa or CAT IIIb require Special Aircrew and Aircraft Certification.
 6. Simultaneous approach authorized with RWY 33R/L.
 7. LOC procedure N/A during simultaneous operations.



RECOMMENDED PROFILE		DME IRKN	4	3	2	TRANSITION ALT 14 000	
Final Approach Gradient 5.24%, 318 ft/NM		ALT(HGT)	1 297 (1 274)	978 (955)	660 (637)	TRANSITION LVL FL 140	



CATEGORY	DA(DH)/MDA(MDH)	A					B					C					D					DL
		A					B					C					D					
Straight-in	CAT-I (CG 2.5%)	FULL	251	RVR 550 m, VIS 800 m					1 200 m													
		ALS INOP	(228)																			
	CAT-I (CG 3.0%)	FULL	223	RVR 550 m, VIS 800 m					1 200 m													
		ALS INOP	(200)																			
		LOC	GP INOP	380	900 m					1 600 m												
			GP & ALS INOP	(357)																		
	CAT II		123(100)	300 m					300 m ¹ /350 m													
	CAT IIIa		-	175 m																		
	CAT IIIb		-	75 m ² /125 m																		

MISSED APPROACH
(Climb to 500 ft on RWY Heading then turn LEFT on HDG 318° to WING D7, continue climb to 3 000 ft LEFT turn direct to KUDRY. Hold as published.)

NOTE

1. Missed approach turn limited to 210 kt IAS maximum.
2. Missed approach minimum climb gradient of 2.5% to 3 000 ft(DH 228), 3% to 1 000 ft(DH 200 or 100).

* Timing Not authorized for defining MAPt.
* Circling Not authorized.

1) For CAT D/DL aeroplane conducting an autoland.
2) Aeroplane use Fail-operational system.

Change : Amended ILS plan view symbol.

SEOUL/Incheon Intl(RKSI)
ILS or LOC RWY 34
CAT II & III

AERONAUTICAL DATA TABULATION

ILS/LOC Approach to RWY 34 from PULUN to MENTO(IF)		
Fix / Point	Coordinates	
PULUN(IAF)	37°10'22.2"N	126°42'55.7"E
MENTO(IF)	BRG 325.81°/11.20NM	37°18'39.4"N 126°33'33.4"E

ILS/LOC Approach to RWY 34 from KOTRA to MENTO(IF)		
Fix / Point	Coordinates	
KOTRA(IAF)	37°12'21.3"N	126°32'17.4"E
MENTO(IF)	BRG 017.00°/6.40NM	37°18'39.4"N 126°33'33.4"E

ILS/LOC Approach to RWY 34 from MENTO(IF) to MAHF		
Fix / Point	Coordinates	
HOKEY(FAF)	BRG 332.58°/4.90NM IRKN	37°22'45.3"N 126°29'55.4"E
D1.0 IRKN(MAPt) (LOC ONLY)	BRG 332.58°/1.00NM IRKN	37°25'55.8"N 126°27'06.2"E
WNG VOR/DME		37°25'58.6"N 126°27'00.0"E
THR RWY34		37°26'36.29"N 126°26'30.21"E
IRKN DME		37°26'42.5"N 126°26'18.8"E
Climb to 500 ft	HDG 333	-
D7 WNG		-
KUDRY	BRG 194.59°/13.00NM WNG	37°17'58.7"N 126°14'09.0"E

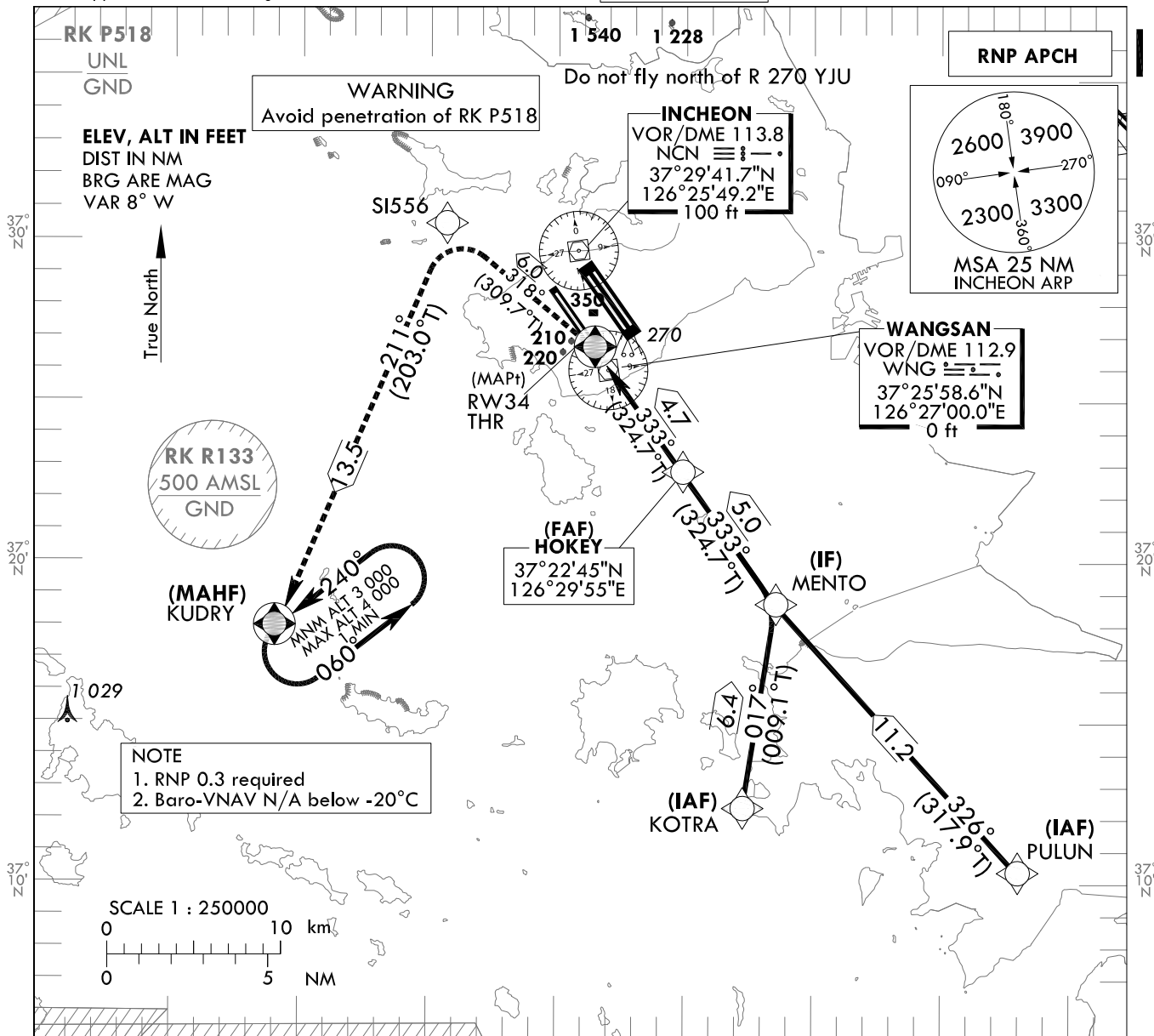
**INSTRUMENT
APPROACH
CHART - ICAO**

AERODROME ELEV 23 ft
HEIGHTS RELATED TO
THR RWY 34 - ELEV 23 ft

SEOUL APP 119.75
119.1
INCHEON TWR 118.8
118.2

**SEOUL/Incheon Intl(RKSI)
RNP RWY 34**

Note : Approach under ICAO Flight Procedures.



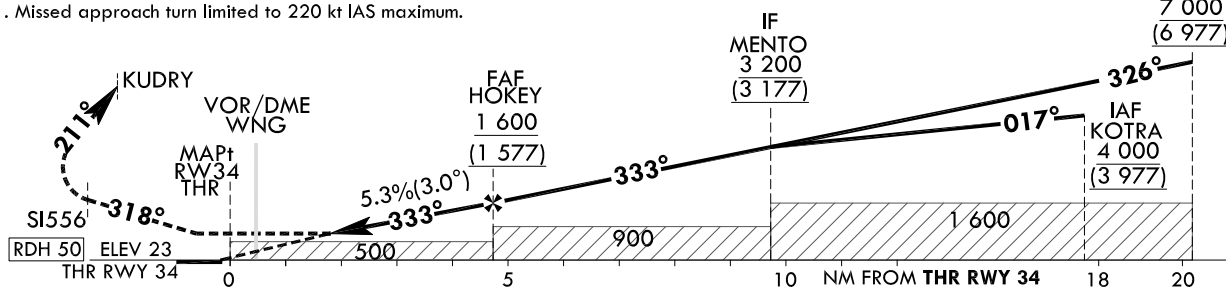
MISSED APPROACH

Climb to 3 000 ft. Track to SI556, KUDRY. Hold as published.

NOTE

1. Missed approach turn limited to 220 kt IAS maximum.

TRANSITION ALT 14 000
TRANSITION LVL FL 140



CATEGORY		MDA(H)/DA(H)	A	B	C	D	Knots						
LNAV	FULL	510 (487)	1 500 m				Rate of descent	V/V fpm	324	486	648	810	972
	ALS INOP		2 300 m										
LNAV/VNAV	FULL	430 (407)	1 200 m				* Timing Not authorized for defining MAPt. * Circling Not authorized.						
	ALS INOP		1 900 m										

Change : Amended procedure name(RNAV(GNSS) → RNP).

SEOUL/Incheon Intl(RKSI)
RNP RWY 34

AERONAUTICAL DATA TABULATION

Instrument Approach Procedure Coding Tables

RNP RWY 34 - via PULUN to MENTO(IF)

Serial Number	Path Descriptor	Waypoint Identifier	Fly-over	Course/Track °M(°T)	Distance (NM)	Turn direction	Altitude (ft)	Speed (kt)	Coordinates	VPA/TCH	Navigation specification	Remarks
001	IF	PULUN	-	-	-	-	+7 000	-	37°10'22.2"N 126°42'55.7"E (R 153 NCN/D24, R 149 WNG/D20)	-	RNP APCH	IAF
002	TF	MENTO	-	326 (317.9)	11.2	-	+3 200	-	37°18'39.4"N 126°33'33.4"E (R 159 NCN/D13, R 152 WNG/D9)	-	RNP APCH	IF

RNP RWY 34 - via KOTRA to MENTO(IF)

Serial Number	Path Descriptor	Waypoint Identifier	Fly-over	Course/Track °M(°T)	Distance (NM)	Turn direction	Altitude (ft)	Speed (kt)	Coordinates	VPA/TCH	Navigation specification	Remarks
001	IF	KOTRA	-	-	-	-	+4 000	-	37°12'21.3"N 126°32'17.4"E (R 171 NCN/D18, R 171 WNG/D14)	-	RNP APCH	IAF
002	TF	MENTO	-	017 (009.1)	6.4	-	+3 200	-	37°18'39.4"N 126°33'33.4"E (R 159 NCN/D13, R 152 WNG/D9)	-	RNP APCH	IF

RNP RWY 34 - via MENTO(IF) to MAHF

Serial Number	Path Descriptor	Waypoint Identifier	Fly-over	Course/Track °M(°T)	Distance (NM)	Turn direction	Altitude (ft)	Speed (kt)	Coordinates	VPA/TCH	Navigation specification	Remarks
002	TF	MENTO	-	-	-	-	+3 200	-	37°18'39.4"N 126°33'33.4"E (R 159 NCN/D13, R 152 WNG/D9)	-	RNP APCH	IF
003	TF	HOKEY	-	333 (324.7)	5.0	-	+1 600	-	37°22'45.3"N 126°29'55.4"E (R 163 NCN/D8, R 152 WNG/D4)	-	RNP APCH	FAF
004	TF	RW34	Y	333 (324.7)	4.7	-	+510	-	37°26'36.29"N 126°26'30.22"E (R 178 NCN/D3, R 336 WNG/D1)	-3.01/50	RNP APCH	MAPt
005	TF	S1556	-	318 (309.7)	6.0	-	-	-220	37°30'24.6"N 126°20'44.8"E (R 288 NCN/D4, R 320 NCN/D7)	-	RNP APCH	-
006	TF	KUDRY	Y	211 (203.0)	13.5	-	+3 000	-220	37°17'58.7"N 126°14'09.0"E (R 226 NCN/D15, R 240 WNG/D13)	-	RNP APCH	-
007	HM	KUDRY	Y	240 (232.0)	-	L	+4 000 +3 000	-	37°17'58.7"N 126°14'09.0"E (R 226 NCN/D15, R 240 WNG/D13)	-	RNP APCH	1 min (Outbound timing)

Change : Amended procedure name(RNAV(GNSS) → RNP).